

BLACKHAWK

Tire Direct
La nueva generación



BLACKHAWK
THE ROAD IS YOUR PREY



PASSENGER & LIGHT TRUCK TIRE CATALOG



PASSENGER

SUMMER



ALL SEASON



WINTER



SUV/4X4

ON ROAD



4X4 OFF ROAD



VAN/COMMERCIAL

SUMMER



WINTER



HU02

HU02's tread formulation is specially designed to ensure excellent rolling resistance as well as a stronger apex to prevent damage to the bead.



PATTERN DESIGN & FEATURES

Product Design

Product Performance



Wet Performance

The tread's four main grooves efficiently drain water for improved safety in wet weather conditions.



Handling Performance

The inner tread elements provide stronger grip on both wet and dry roads.



Shoulder Design

Aggressive high angle grooves enhance water drainage to improve wet handling and hydroplaning resistance.

SIZES



RIM	SIZE	PR	LI	SS	XL OR NOT	SIDEWALL	STANDARD RIM	UTQG	MAX LOAD (kg)	PRESSURE (kpa)	PLANT
16	205/45ZR16		87	W	XL	BSW	7J	300/AA/A	545	340	CN
16	205/50ZR16		87	W		BSW	6 1/2J	300/AA/A	545	300	CN
16	195/55R16		91	V	XL	BSW	6J	300/AA/A	615	340	CN
16	205/55ZR16		94	W	XL	BSW	6 1/2J	300/AA/A	670	340	CN
16	215/55ZR16		97	W	XL	BSW	7J	300/AA/A	730	340	CN
16	225/55ZR16		99	W	XL	BSW	7J	300/AA/A	775	340	CN/VN
16	205/60R16		92	V		BSW	6J	300/AA/A	630	300	CN
16	225/60R16		98	V		BSW	6 1/2J	300/AA/A	750	300	CN
16	235/60R16		100	V		BSW	7J	300/AA/A	800	300	CN
16	205/65R16		95	V		BSW	6J	300/AA/A	690	300	CN
17	205/40ZR17		84	W	XL	BSW	7 1/2J	300/AA/A	500	340	CN
17	215/40ZR17		87	W	XL	BSW	7 1/2J	300/AA/A	545	340	CN/VN
17	245/40ZR17		95	W	XL	BSW	8 1/2J	300/AA/A	690	340	CN/VN
17	205/45ZR17		88	W	XL	BSW	7J	300/AA/A	560	340	CN
17	215/45ZR17		91	W	XL	BSW	7J	300/AA/A	615	340	CN/VN
17	225/45ZR17		94	W	XL	BSW	7 1/2J	300/AA/A	670	340	CN/VN
17	235/45ZR17		97	W	XL	BSW	8J	300/AA/A	730	340	CN/VN
17	245/45ZR17		99	W	XL	BSW	8J	300/AA/A	775	340	CN
17	205/50ZR17		93	W	XL	BSW	6 1/2J	400/AA/A	650	340	CN/VN
17	215/50ZR17		95	W	XL	BSW	7J	300/AA/A	690	340	CN
17	225/50ZR17		98	W	XL	BSW	7J	300/AA/A	750	340	CN/VN
17	235/50ZR17		100	W	XL	BSW	7 1/2J	300/AA/A	800	340	CN
17	215/55ZR17		94	W		BSW	7J	300/AA/A	670	300	CN/VN/ KH
17	225/55ZR17		101	W	XL	BSW	7J	300/AA/A	825	340	CN/VN
17	235/55ZR17		103	W	XL	BSW	7 1/2J	300/AA/A	875	340	CN

STREET-H


Tire Direct
 La nueva generación

**BLACKHAWK
TIRE**

SIZES



RIM	SIZE	PR	LI	SS	XL OR NOT	SIDEWALL	STANDARD RIM	UTQG	MAX LOAD (kg)	PRESSURE (kpa)	PLANT
18	215/35ZR18		84	Y	XL	BSW	7 1/2J	300/AA/A	500	340	CN
18	255/35ZR18		94	Y	XL	BSW	9J	300/AA/A	670	340	CN
18	205/40ZR18		82	W		BSW	7 1/2J	300/AA/A	475	300	CN
18	225/40ZR18		92	W	XL	BSW	8J	300/AA/A	630	340	CN/VN
18	235/40ZR18		95	W	XL	BSW	8 1/2J	300/AA/A	690	340	CN/VN
18	245/40ZR18		97	Y	XL	BSW	8 1/2J	300/AA/A	730	340	CN/VN
18	225/45ZR18		95	Y	XL	BSW	7 1/2J	300/AA/A	690	340	CN
18	235/45ZR18		98	Y	XL	BSW	8J	300/AA/A	750	340	CN
18	245/45ZR18		100	W	XL	BSW	8J	300/AA/A	800	340	CN/VN
18	235/50ZR18		101	W	XL	BSW	7 1/2J	300/AA/A	825	340	CN
19	265/30ZR19		93	Y	XL	BSW	9 1/2J	300/AA/A	650	340	CN
19	275/30ZR19		96	Y	XL	BSW	9 1/2J	300/AA/A	710	340	CN
19	225/35ZR19		88	Y	XL	BSW	8J	300/AA/A	560	340	CN
19	235/35ZR19		91	Y	XL	BSW	8 1/2J	300/AA/A	615	340	CN
19	245/35ZR19		93	Y	XL	BSW	8 1/2J	300/AA/A	650	340	CN
19	255/35ZR19		96	Y	XL	BSW	9J	300/AA/A	710	340	CN
19	275/35ZR19		100	Y	XL	BSW	9 1/2J	300/AA/A	800	340	CN
19	225/40ZR19		93	Y	XL	BSW	8J	300/AA/A	650	340	CN
19	245/40ZR19		98	Y	XL	BSW	8 1/2J	300/AA/A	750	340	CN
19	235/45ZR19		99	W	XL	BSW	8J	300/AA/A	775	340	CN
19	245/45ZR19		102	Y	XL	BSW	8J	300/AA/A	850	340	CN
19	275/45ZR19		108	Y	XL	BSW	9J	300/AA/A	1000	340	CN
19	285/45ZR19		111	Y	XL	BSW	9 1/2J	300/AA/A	1090	340	CN
19	255/50ZR19		107	Y	XL	BSW	8J	300/AA/A	975	340	CN
20	245/30ZR20		90	Y	XL	BSW	8 1/2J	300/AA/A	600	340	CN
20	245/30ZR20		95	Y	XL	BSW	8 1/2J	300/AA/A	690	340	CN

SIZES



RIM	SIZE	PR	LI	SS	XL OR NOT	SIDEWALL	STANDARD RIM	UTQG	MAX LOAD (kg)	PRESSURE (kpa)	PLANT
20	275/30ZR20		97	Y	XL	BSW	9 1/2J	300/AA/A	730	340	CN
20	225/35ZR20		90	Y	XL	BSW	8J	300/AA/A	600	340	CN
20	245/35ZR20		95	Y	XL	BSW	8 1/2J	300/AA/A	690	340	CN
20	275/40ZR20		106	Y	XL	BSW	9 1/2J	300/AA/A	950	340	CN
20	245/45ZR20		103	Y	XL	BSW	8J	300/AA/A	875	340	CN
20	255/45ZR20		105	Y	XL	BSW	8 1/2J	300/AA/A	925	340	CN
20	275/45ZR20		110	Y	XL	BSW	9J	300/AA/A	1060	340	CN
21	325/30ZR21		108	Y	XL	BSW	11 1/2J	300/AA/A	1000	340	CN
21	285/35ZR21		105	Y	XL	BSW	10J	300/AA/A	925	340	CN
21	295/35ZR21		107	Y	XL	BSW	10 1/2J	300/AA/A	975	340	CN
16	195/55RF16		91	V	XL	BSW	6J	300/A/A	615	340	CN
16	205/55ZRF16		94	W	XL	BSW	6 1/2J	300/AA/A	670	340	CN
16	225/55ZRF16		99	W	XL	BSW	7J	300/A/A	775	340	CN
17	225/45ZRF17		94	W	XL	BSW	7 1/2J	300/AA/A	670	340	CN
17	205/50ZRF17		93	W	XL	BSW	6 1/2J	400/A/A	650	340	CN
17	225/50ZRF17		98	W	XL	BSW	7J	300/A/A	750	340	CN
17	225/55ZRF17		101	W	XL	BSW	7J	300/AA/A	825	340	CN
18	225/40ZRF18		92	W	XL	BSW	8J	300/A/A	630	340	CN
18	245/40ZRF18		97	W	XL	BSW	8 1/2J	300/A/A	730	340	CN
18	225/45ZRF18		95	W	XL	BSW	7 1/2J	300/A/A	690	340	CN
18	245/45ZRF18		100	W	XL	BSW	8J	300/A/A	800	340	CN
18	245/50ZRF18		100	Y		BSW	7 1/2J	300/A/A	800	300	CN
19	235/45ZRF19		99	W	XL	BSW	8J	300/A/A	775	340	CN
19	245/45ZRF19		102	W	XL	BSW	8J	300/A/A	850	340	CN
19	255/50RF19		103	V		BSW	8J	300/A/A	875	300	CN

HH01

Excellent handling, superior comfort, high-speed stability and low running noise provide a great driving experience.



PATTERN DESIGN & FEATURES

Product Design	Product Performance
	Tread Elements The tread compound is designed to effectively reduce rolling resistance for an improved fuel economy. Tread pattern offers greater handling for a safer and more comfortable driving experience.
	Noise Emission The tread block pitch order and shoulder grooves effectively reduce running noise and ensure excellent performance.
	Safety The four main grooves and central rib are designed to provide excellent water drainage to improve driving performance for both wet and dry roads.

SIZES



RIM	SIZE	PR	LI	SS	XL OR NOT	SIDEWALL	STANDARD RIM	UTQG	MAX LOAD (kg)	PRESSURE (kpa)	PLANT
13	175/60R13		77	T		BSW	5.00B	420/A/A	412	300	CN
13	185/60R13		80	T		BSW	5.50B	420/A/A	450	300	CN
13	185/60R13		80	T		WR	5.50B	420/A/A	450	300	CN
13	165/65R13		77	T		BSW	5.00B	420/A/A	412	300	CN
13	165/70R13		83	T	XL	BSW	5.00B	420/A/A	487	340	CN
13	175/70R13		82	T		BSW	5.00B	420/A/A	475	300	CN
13	175/70R13		82	T		WR	5.00B	420/A/A	475	300	CN
13	185/70R13		86	T		BSW	5.50B	420/A/B	530	300	CN
14	165/60R14		75	H		BSW	5J	420/A/A	387	300	CN
14	175/60R14		79	H		BSW	5J	420/A/A	437	300	CN
14	185/60R14		82	H		BSW	5 1/2J	420/A/A	475	300	CN
14	195/60R14		86	H		BSW	6J	420/A/A	530	300	CN/VN
14	205/60R14		88	T		BSW	6J	420/A/A	560	300	CN
14	175/65R14		82	T		BSW	5J	420/A/A	475	300	CN
14	175/65R14		86	T	XL	BSW	5J	420/A/A	530	340	CN
14	175/65R14		86	T	XL	RWL	5J		530	340	CN
14	185/65R14		86	H		BSW	5 1/2J	420/A/A	530	300	CN
14	195/65R14		89	H		BSW	6J	420/A/A	580	300	CN/VN
14	165/70R14		85	T	XL	BSW	5J	420/A/A	515	340	CN
14	175/70R14		88	T	XL	BSW	5J	420/A/A	560	340	CN
14	185/70R14		88	H		BSW	5 1/2J	420/A/A	560	300	CN
14	195/70R14		91	T		BSW	6J	420/A/A	615	300	CN
14	205/70R14		95	T		BSW	6J	420/A/A	690	300	CN
14	205/70R14		98	T	XL	BSW	6J	420/A/A	750	340	CN/VN

SIZES



RIM	SIZE	PR	LI	SS	XL OR NOT	SIDEWALL	STANDARD RINM	UTQG	MAX LOAD (kg)	PRESSURE (kpa)	PLANT
15	195/50R15		82	V		BSW	6J	420/A/A	475	300	CN
15	185/55R15		82	V		BSW	6J	420/A/A	475	300	CN
15	195/55R15		85	V		BSW	6J	420/A/A	515	300	CN
15	185/60R15		84	H		BSW	5 1/2J	420/A/A	500	300	CN
15	185/60R15		88	H	XL	BSW	5 1/2J	420/A/A	560	340	CN
15	195/60R15		88	H		BSW	6J	420/A/A	560	300	CN
15	195/60R15		88	V		BSW	6J	420/A/A	560	300	CN
15	205/60R15		91	H		BSW	6J	420/A/A	615	300	CN
15	205/60R15		95	H	XL	BSW	6J	420/A/A	690	340	CN
15	215/60R15		94	H		BSW	6 1/2J	420/A/A	670	300	CN
15	225/60R15		96	V		BSW	6 1/2J	420/A/A	710	300	CN
15	175/65R15		84	H		BSW	5J	420/A/A	500	300	CN
15	185/65R15		88	H		BSW	5 1/2J	420/A/A	560	300	CN
15	185/65R15		92	H	XL	BSW	5 1/2J	420/A/A	630	340	CN
15	195/65R15		91	V		BSW	6J	420/A/A	615	300	CN
15	195/65R15		95	T	XL	BSW	6J	420/A/A	690	340	CN
15	205/65R15		94	H		BSW	6J	420/A/A	670	300	CN
15	205/65R15		94	V		BSW	6J	420/A/A	670	300	CN
15	215/65R15		96	H		BSW	6 1/2J	420/A/A	710	300	CN
15	215/65R15		96	V		BSW	6 1/2J	420/A/A	710	300	CN
15	205/70R15		96	T		BSW	6J	420/A/B	710	300	CN
15	215/70R15		98	H		BSW	6 1/2J	420/A/A	750	300	CN
16	195/50R16		88	V	XL	BSW	6J	420/A/A	560	340	CN
16	205/50R16		87	V		BSW	6 1/2J	420/A/A	545	300	CN
16	225/50R16		92	V		BSW	7J	420/A/A	630	300	CN/VN
16	205/55R16		91	V		BSW	6 1/2J	420/A/A	615	300	CN
16	215/55R16		97	H	XL	BSW	7J	420/A/A	730	340	CN

SIZES



RIM	SIZE	PR	LI	SS	XL OR NOT	SIDEWALL	STANDARD RINM	UTQG	MAX LOAD (kg)	PRESSURE (kpa)	PLANT
16	195/60R16		89	V		BSW	6J	420/A/A	580	300	CN
16	205/60R16		92	H		BSW	6J	420/A/A	630	300	CN
16	205/60R16		92	V		BSW	6J	420/A/A	630	300	CN
16	215/60R16		95	H		BSW	6 1/2J	420/A/A	690	300	CN
16	215/60R16		95	V		BSW	6 1/2J	420/A/A	690	300	CN
16	225/60R16		98	H		BSW	6 1/2J	420/A/A	750	300	CN
16	205/65R16		95	H		BSW	6J	420/A/A	690	300	CN
16	215/65R16		98	T		BSW	6 1/2J	420/A/A	750	300	CN
16	235/65R16		103	H		BSW	7J	420/A/B	875	300	CN
17	215/45R17		91	W	XL	BSW	7J	420/A/A	615	340	CN
17	225/45R17		94	W	XL	BSW	7 1/2J	420/A/A	670	340	CN
17	235/45R17		97	W	XL	BSW	8J	420/A/A	730	340	CN
17	205/50R17		89	V		BSW	6 1/2J	420/A/A	580	300	CN
17	215/50R17		91	V		BSW	7J	420/A/A	615	300	CN
17	225/50R17		94	V		BSW	7J	420/A/A	670	300	CN
17	215/55R17		94	V		BSW	7J	420/A/A	670	300	CN
17	225/55R17		97	V		BSW	7J	420/A/A	730	300	CN
17	225/55R17		97	W		BSW	7J	420/A/A	730	300	CN
17	215/60R17		96	H		BSW	6 1/2J	420/A/A	710	300	CN
17	215/60R17		96	T		BSW	6 1/2J	420/A/A	710	300	CN
17	225/60R17		99	H		BSW	6 1/2J	420/A/A	775	300	CN
17	235/60R17		102	T		BSW	7J	420/A/A	850	300	CN
17	215/65R17		99	T		BSW	6 1/2J	420/A/B	775	300	CN
18	235/40R18		95	W	XL	BSW	8 1/2J	420/A/A	690	340	CN
18	235/55R18		100	V		BSW	7 1/2J	420/A/A	800	300	CN
18	235/60R18		103	H		BSW	7J	420/A/A	875	300	CN
18	235/60R18		107	V	XL	BSW	7J	420/A/A	975	340	CN

HH16

The HH16 is an HP product designed to improve driving comfort, performance at high speeds and on wet road conditions, and comes with a longer tire life.



PATTERN DESIGN & FEATURES

Product Design

Product Performance



Driving Comfort

The tread is designed with varying pitches to effectively disperse noise vibrations allowing for a quiet and comfortable ride when driving at high speed.



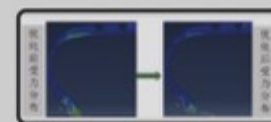
Handling Performance

Tread ribs utilize a cut section that offers better grip and handling stability. The thin outer groove connects the tire rib and shoulder for better durability, further improving handling stability.



Wet Performance

Two wide central grooves effectively expel water while the tread sipes break through water film for improved braking performance on wet roads.



Long Life

Optimized tread contour design effectively distributes ground pressure to promote even wear, offering a longer tire life.

SIZES



RIM	SIZE	PR	LI	SS	XL OR NOT	SIDEWALL	STANDARD RIMM	UTQG	MAX LOAD (kg)	PRESSURE (kpa)	PLANT
15	195/55R15		85	V		BSW	6J	420/A/A	515	300	CN
15	185/60R15		84	H		BSW	5 1/2J	420/A/A	500	300	CN
15	195/60R15		88	V		BSW	6J	420/A/A	560	300	CN
15	185/65R15		88	H		BSW	5 1/2J	420/A/A	560	300	CN
15	195/65R15		91	V		BSW	6J	420/A/A	615	300	CN
15	205/65R15		94	V		BSW	6J	420/A/A	670	300	CN
16	205/55R16		94	V	XL	BSW	6 1/2J	420/A/A	670	340	CN
16	195/60R16		89	V		BSW	6J	420/A/A	580	300	CN
16	215/60R16		95	V		BSW	6 1/2J	420/A/A	690	300	CN
17	205/55R17		91	V		BSW	6 1/2J	420/A/A	615	300	CN
17	215/55R17		94	W		BSW	7J	420/A/A	670	300	CN
17	225/55R17		101	W	XL	BSW	7J	420/A/A	825	340	CN
17	235/55R17		103	V	XL	BSW	7 1/2J	420/A/A	875	340	CN

SPORT

Tire Direct
La nueva generación

BLACKHAWK
TIRE

RS1

SPORT RS1 is a performance tire offering exceptional grip and handling, the first choice for car enthusiasts.



PATTERN DESIGN & FEATURES

Product Design	Product Performance
	Driving Comfort Wide tread and large tread to groove surface area greatly improves the tire's ground contact area, offering improved safety and handling stability.
	Tread Pattern Large tread blocks strengthen overall tire durability and improve handling stability.
	Tread Design Wide inner tread grooves paired with the flowing outer grooves effectively expels water to offer improved safety on wet roads.



SIZES



RIM	SIZE	PR	LI	SS	XL OR NOT	SIDEWALL	STANDARD RIMM	UTQG	MAX LOAD (kg)	PRESSURE (kpa)	PLANT
18	295/40R18		103	V		BSW	10 1/2J	180/AA/A	875	300	CN
18	255/45R18		103	V	XL	BSW	8 1/2J		875	340	CN
18	255/55R18		109	V	XL	BSW	8J		1030	340	CN



HC01

With a long service life and low rolling resistance HC01 is the perfect product for taxis and urban households.



PATTERN DESIGN & FEATURES

Product Design

Product Performance



Fuel Economy

The silicon tread compound and reinforced shoulder design effectively reduce rolling resistance for improved fuel economy.



Long Tread Life

A wide tread surface, deep grooves, and scratch resistant shoulder improve abrasion resistance for a longer tread life.



Water Drainage

The wide main grooves effectively drain water for a safe ride on wet roads.



SIZES



RIM	SIZE	PR	LI	SS	XL OR NOT	SIDEWALL	STANDARD RIM	UTQG	MAX LOAD (kg)	PRESSURE (kpa)	PLANT
12	165/70R12		77	T		RWL	5.00B	620/A/A	412	300	CN
12	165/70R12		77	T		BSW	5.00B	620/A/A	412	300	CN

STREET-H



Tire Direct
La nueva generación

**BLACKHAWK
TIRE**

HU71

The next generation of UHP performance, the HU71 is designed for exceptional handling performance in wet and dry weather while also boasting a longer tread life.



PATTERN DESIGN & FEATURES

Product Design	Product Performance
	Wet Performance The optimized tread contour effectively expels water for better grip on wet roads.
	Exceptional Handling The interconnected tread shoulder improves shoulder durability for precision turning and handling performance.
	Improved Durability Tread body is equipped with a double-layer ply which helps to protect the sidewall, improve support and promote even tread wear.

SIZES



RIM	SIZE	PR	LI	SS	XL OR NOT	SIDEWALL	STANDARD RIM	UTQG	MAX LOAD (kg)	PRESSURE (kpa)	PLANT
16	215/55ZR16		97	W	XL	BSW	7J	420/A/A	730	340	CN
16	225/55ZR16		99	W	XL	BSW	7J	420/A/A	775	340	CN
17	215/45ZR17		91	Y	XL	BSW	7J	420/A/A	615	340	CN
17	225/45ZR17		94	Y	XL	BSW	7 1/2J	420/A/A	670	340	CN
17	235/45ZR17		97	Y	XL	BSW	8J	420/A/A	730	340	CN
17	215/50ZR17		95	W	XL	BSW	7J	420/A/A	690	340	CN
17	225/50ZR17		98	W	XL	BSW	7J	420/A/A	750	340	CN
17	215/55ZR17		98	W	XL	BSW	7J	420/A/A	750	340	CN
17	225/55ZR17		101	W	XL	BSW	7J	420/A/A	825	340	CN
18	245/40ZR18		97	Y	XL	BSW	8 1/2J	420/A/A	730	340	CN
18	225/45ZR18		95	Y	XL	BSW	7 1/2J	420/A/A	690	340	CN
18	235/45ZR18		98	Y	XL	BSW	8J	420/A/A	750	340	CN
18	245/45ZR18		100	Y	XL	BSW	8J	420/A/A	800	340	CN
19	245/45ZR19		102	Y	XL	BSW	8J	420/A/A	850	340	CN
20	275/45ZR20		110	Y	XL	BSW	9J	420/A/A	1060	340	CN



HU01

The STREET-H HU01 is an ultra-high performance all-season tire, designed for performance under all weather conditions.



ECONOMICAL HANDLING NOISE RIM PROTECTION ANTI-SKID

PATTERN DESIGN & FEATURES

Product Design

Product Performance



Tapered Tread Edges

Promotes uniform contact pressure for improved stability.



Tread Block Design

The tread blocks are grooved to reinforce block stiffness, promote even load distribution, and improve handling and tread wear.



Groove Design

Aggressive high angle grooves enhance water drainage to improve wet handling and hydroplaning resistance.

SIZES



RIM	SIZE	PR	LI	SS	XL OR NOT	SIDEWALL	STANDARD RIM	UTQG	MAX LOAD (kg)	PRESSURE (kpa)	PLANT
16	205/50ZR16		87	W		BSW	6 1/2J	480/AA/A	545	300	VN
16	225/50ZR16		92	W		BSW	7J	480/AA/A	630	300	VN
16	205/55ZR16		91	W		BSW	6 1/2J	480/AA/A	615	300	VN
16	215/55ZR16		97	W	XL	BSW	7J	480/AA/A	730	340	VN
16	225/55ZR16		99	W	XL	BSW	7J	480/AA/A	775	340	VN
17	205/40ZR17		84	W	XL	BSW	7 1/2J	480/AA/A	500	340	VN
17	245/40ZR17		95	W	XL	BSW	8 1/2J	480/AA/A	690	340	VN
17	205/45ZR17		84	W		BSW	7J	480/AA/A	500	300	VN
17	215/45ZR17		91	W	XL	BSW	7J	480/AA/A	615	340	VN
17	225/45ZR17		94	W	XL	BSW	7 1/2J	480/AA/A	670	340	VN
17	235/45ZR17		97	W	XL	BSW	8J	480/AA/A	730	340	VN
17	245/45ZR17		99	W	XL	BSW	8J	480/AA/A	775	340	VN
17	205/50ZR17		93	W	XL	BSW	6 1/2J	480/AA/A	650	340	VN
17	215/50ZR17		95	W	XL	BSW	7J	480/AA/A	690	340	VN
17	225/50ZR17		98	W	XL	BSW	7J	480/AA/A	750	340	VN
17	215/55ZR17		98	W	XL	BSW	7J	480/AA/A	750	340	VN
17	225/55ZR17		101	W	XL	BSW	7J	480/AA/A	825	340	VN
17	235/55ZR17		99	W		BSW	7 1/2J	480/AA/A	775	300	VN
18	215/35ZR18		84	W	XL	BSW	7 1/2J	480/AA/A	500	340	VN
18	225/40ZR18		92	W	XL	BSW	8J	480/AA/A	630	340	VN
18	235/40ZR18		95	W	XL	BSW	8 1/2J	480/AA/A	690	340	VN
18	245/40ZR18		97	W	XL	BSW	8 1/2J	480/AA/A	730	340	VN
18	225/45ZR18		95	W	XL	BSW	7 1/2J	480/AA/A	690	340	VN
18	245/45ZR18		100	W	XL	BSW	8J	480/AA/A	800	340	VN
18	255/45ZR18		103	W	XL	BSW	8 1/2J	480/AA/A	875	340	VN
18	235/50ZR18		101	W	XL	BSW	7 1/2J	480/AA/A	825	340	VN/KN
19	235/40R19		96	V	XL	BSW	8 1/2J	480/AA/A	710	340	VN
19	245/40ZR19		98	W	XL	BSW	8 1/2J	480/AA/A	750	340	VN
19	245/45ZR19		98	W		BSW	8J	480/AA/A	750	300	VN
20	245/35ZR20		95	W	XL	BSW	8 1/2J	480/AA/A	690	340	VN
20	255/35ZR20		97	W	XL	BSW	9J	480/AA/A	730	340	VN
20	275/40ZR20		106	W	XL	BSW	9 1/2J	480/AA/A	950	340	VN
20	245/45ZR20		103	W	XL	BSW	8J	480/AA/A	875	340	VN



HH11

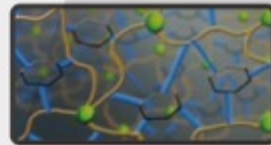
The STREET-H HH11 is a high-performance tire that uses the latest tread formula with a strong tire structure and advanced tread pattern design. It can be used in various road and weather conditions, offering a smooth ride and better handling with higher mileage.



PATTERN DESIGN & FEATURES

Product Design

Product Performance



Higher Mileage

The tread compound is designed to improve overall wear resistance for greater fuel economy.



Handling Stability

Three evenly distributed designs and large shoulder tread blocks combine to increase the overall tire footprint. These details help to improve overall mileage and handling performance.



Driving Comfort

The optimized tread pitch arrangement better absorbs vibrations for a more comfortable ride.



Wet Performance

Tread sipes effectively break through water film to ensure greater grip on wet roads.

SIZES

RIM	SIZE	PR	LI	SS	XL OR NOT	SIDEWALL	STANDARD RIMM	UTQG	MAX LOAD (kg)	PRESSURE (kpa)	PLANT
12	155/70R12		73	T		BSW	4.50B	420/A/A	365	300	VN
13	165/60R13		73	H		BSW	5.00B	420/A/A	365	300	VN
13	155/70R13		75	T		BSW	4.50B	420/A/A	387	300	VN
13	175/70R13		82	T		BSW	5.00B	420/A/A	475	300	VN
14	165/55R14		72	H		BSW	5J	420/A/A	355	300	VN
14	185/60R14		82	H		BSW	5 1/2J	420/A/A	475	300	VN
14	175/65R14		86	T	XL	BSW	5J	420/A/A	530	340	VN
14	185/65R14		86	H		BSW	5 1/2J	420/A/A	530	300	VN
14	175/70R14		84	T		BSW	5J	420/A/A	500	300	VN
14	185/70R14		88	H		BSW	5 1/2J	420/A/A	560	300	VN
14	195/70R14		91	T		BSW	6J	420/A/A	615	300	VN
15	165/50R15		76	H	XL	BSW	5J	420/A/A	400	340	VN
15	175/50R15		75	H		BSW	5 1/2J	420/A/A	387	300	VN
15	195/50R15		82	V		BSW	6J	420/A/A	475	300	VN
15	195/50R15		86	V	XL	BSW	6J	420/A/A	530	340	VN
15	185/55R15		82	V		BSW	6J	420/A/A	475	300	VN
15	195/55R15		85	V		BSW	6J	420/A/A	515	300	VN
15	175/60R15		81	H		BSW	5J	420/A/A	462	300	VN
15	185/60R15		88	H	XL	BSW	5 1/2J	420/A/A	560	340	VN
15	195/60R15		88	H		BSW	6J	420/A/A	560	300	VN
15	205/60R15		95	H	XL	BSW	6J	420/A/A	690	340	VN
15	215/60R15		94	H		BSW	6 1/2J	420/A/A	670	300	VN
15	185/65R15		92	H	XL	BSW	5 1/2J	420/A/A	630	340	VN
15	195/65R15		91	H		BSW	6J	420/A/A	615	300	VN
15	205/65R15		94	H		BSW	6J	420/A/A	670	300	VN
15	215/65R15		96	H		BSW	6 1/2J	420/A/A	710	300	VN
15	205/70R15		96	T		BSW	6J	420/A/A	710	300	VN
15	215/70R15		98	T		BSW	6 1/2J	420/A/A	750	300	VN
16	205/50R16		87	H		BSW	6 1/2J	420/A/A	545	300	VN
16	205/55R16		91	H		BSW	6 1/2J	420/A/A	615	300	VN/KH
16	205/55R16		94	V	XL	BSW	6 1/2J	420/A/A	670	340	VN/KH
16	215/55R16		97	H	XL	BSW	7J	420/A/A	730	340	VN
16	205/60R16		92	H		BSW	6J	420/A/A	630	300	VN
16	215/60R16		95	H		BSW	6 1/2J	420/A/A	690	300	VN/KH
16	225/60R16		98	H		BSW	6 1/2J	420/A/A	750	300	VN
16	205/65R16		95	H		BSW	6J	420/A/A	690	300	VN
16	215/65R16		98	T		BSW	6 1/2J	420/A/A	750	300	VN
16	225/65R16		100	H		BSW	6 1/2J	420/A/A	800	300	VN
17	215/45R17		87	W		BSW	7J	420/A/A	545	300	VN
17	225/45R17		91	V		BSW	7 1/2J	420/A/A	615	300	VN
17	205/50R17		89	V		BSW	6 1/2J	420/A/A	580	300	VN
17	215/50R17		91	V		BSW	7J	420/A/A	615	300	VN
17	225/50R17		94	V		BSW	7J	420/A/A	670	300	VN
17	215/55R17		94	V		BSW	7J	420/A/A	670	300	VN/KH
17	225/55R17		97	V		BSW	7J	420/A/A	730	300	VN
17	225/55R17		97	W		BSW	7J	420/A/A	730	300	VN
17	215/60R17		96	T		BSW	6 1/2J	420/A/A	710	300	VN
17	225/60R17		99	H		BSW	6 1/2J	420/A/A	775	300	VN
17	235/60R17		102	T		BSW	7J	420/A/A	850	300	VN
17	215/65R17		99	T		BSW	6 1/2J	420/A/A	775	300	VN
18	225/45R18		95	W	XL	BSW	7 1/2J	420/A/A	690	340	VN
18	235/45R18		94	V		BSW	8J	420/A/A	670	300	VN
18	235/55R18		100	V		BSW	7 1/2J	420/A/A	800	300	VN
18	235/60R18		103	H		BSW	7J	420/A/A	875	300	VN

HH4S



Specially designed all season tire.



PATTERN DESIGN & FEATURES

Product Design	Product Performance
	Noise Emissions Tread pitch is designed to effectively reduce noise emissions for a quiet driving experience.
	All-Season Versatility Tread and groove design ensures handling, grip, and stability for all seasons.
	Inner Tread Improved handling on wet and snowy roads while also improving grip and braking efficiency.
	Outer Tread Improved handling and stability on dry roads.

SIZES



RIM	SIZE	PR	LI	SS	XL OR NOT	SIDEWALL	STANDARD RIM	UTQG	MAX LOAD (kg)	PRESSURE (kpa)	PLANT
13	155/70R13		75	T		BSW	4.50B	300/A/A	387	300	CN
13	155/80R13		79	T		BSW	4.50B	300/A/A	437	300	CN
14	165/60R14		79	H	XL	BSW	5J	300/A/A	437	340	CN
14	185/60R14		82	T		BSW	5 1/2J	300/A/A	475	300	CN
14	155/65R14		75	T		BSW	4 1/2J	300/A/A	387	300	CN
14	165/65R14		79	T		BSW	5J	300/A/A	437	300	CN
14	175/65R14		82	T		BSW	5J	300/A/A	475	300	CN
14	185/65R14		86	T		BSW	5 1/2J	300/A/A	530	300	CN
14	175/70R14		88	T	XL	BSW	5J	300/A/A	560	340	CN
15	195/50R15		82	H		BSW	6J	300/A/A	475	300	CN
15	185/55R15		82	H		BSW	6J	300/A/A	475	300	CN
15	195/55R15		85	H		BSW	6J	300/A/A	515	300	CN
15	185/60R15		88	H	XL	BSW	5 1/2J	300/A/A	560	340	CN
15	195/60R15		88	H		BSW	6J	300/A/A	560	300	CN
15	175/65R15		84	H		BSW	5J	300/A/A	500	300	CN
15	185/65R15		88	H		BSW	5 1/2J	300/A/A	560	300	CN
15	195/65R15		91	H		BSW	6J	300/A/A	615	300	CN
16	205/45R16		87	V	XL	BSW	7J	300/A/A	545	340	CN
16	195/55R16		87	V		BSW	6J	300/A/A	545	300	CN
16	205/55R16		94	H	XL	BSW	6 1/2J	300/A/A	670	340	CN
16	215/55R16		97	V	XL	BSW	7J	300/A/A	730	340	CN
16	225/55R16		99	V	XL	BSW	7J	300/A/A	775	340	CN
16	205/60R16		96	V	XL	BSW	6J	300/A/A	710	340	CN
16	215/60R16		99	V	XL	BSW	6 1/2J	300/A/A	775	340	CN
17	225/45R17		94	V	XL	BSW	7 1/2J	300/A/A	670	340	CN
17	205/50R17		93	V	XL	BSW	6 1/2J	300/A/A	650	340	CN
17	225/50R17		98	V	XL	BSW	7J	300/A/A	750	340	CN
17	225/65R17		102	T		BSW	6 1/2J	300/A/A	850	300	CN

ICE PREY

Tire Direct
La nueva generación



HW01



The special tread compound improves traction performance on snow and ice.



PATTERN DESIGN & FEATURES

Product Design	Product Performance
	Handling Wide tread and grooves improve handling on both ice and snow.
	Groove Design The sawtooth design on the edge of the grooves provides greater traction on snow and ice.
	Winter Safety V-shaped tread effectively expels water while the tread's winter compound maintains flexibility and improves wear resistance.



SIZES

RIM	SIZE	PR	LI	SS	XL OR NOT	SIDEWALL	STANDARD RIM	UTQG	MAX LOAD (kg)	PRESSURE (kpa)	PLANT
13	155/70R13		75	T		BSW	4.50B		387	300	CN
13	165/70R13		83	T	XL	BSW	5.00B		487	340	CN
13	175/70R13		86	T	XL	BSW	5.00B		530	340	CN
14	185/60R14		82	T		BSW	5 1/2J		475	300	CN
14	195/60R14		86	T		BSW	6J		530	300	CN
14	165/65R14		79	T		BSW	5J		437	300	CN
14	175/65R14		86	T	XL	BSW	5J		530	340	CN
14	185/65R14		86	T		BSW	5 1/2J		530	300	CN
14	175/70R14		88	T	XL	BSW	5J		560	340	CN
14	185/70R14		92	T	XL	BSW	5 1/2J		630	340	CN
14	205/70R14		98	T	XL	BSW	6J		750	340	CN
15	185/55R15		86	H	XL	BSW	6J		530	340	CN
15	195/55R15		89	H	XL	BSW	6J		580	340	CN
15	185/60R15		88	H	XL	BSW	5 1/2J		560	340	CN
15	195/60R15		88	T		BSW	6J		560	300	CN
15	205/60R15		91	H		BSW	6J		615	300	CN
15	175/65R15		88	H	XL	BSW	5J		560	340	CN
15	185/65R15		88	T		BSW	5 1/2J		560	300	CN
15	195/65R15		95	T	XL	BSW	6J		690	340	CN
15	205/65R15		94	H		BSW	6J		670	300	CN
15	205/70R15		96	T		BSW	6J		710	300	CN
16	195/45R16		84	H	XL	BSW	6 1/2J		500	340	CN
16	195/55R16		87	H		BSW	6J		545	300	CN
16	205/55R16		94	H	XL	BSW	6 1/2J		670	340	CN
16	215/55R16		97	H	XL	BSW	7J		730	340	CN
16	225/55R16		99	H	XL	BSW	7J		775	340	CN
16	205/60R16		92	H		BSW	6J		630	300	CN
16	215/60R16		99	H	XL	BSW	6 1/2J		775	340	CN
16	225/60R16		98	H		BSW	6 1/2J		750	300	CN
16	215/65R16		98	H		BSW	6 1/2J		750	300	CN
17	215/45R17		87	H		BSW	7J		545	300	CN
17	225/45R17		94	H	XL	BSW	7 1/2J		670	340	CN
17	235/45R17		94	H		BSW	8J		670	300	CN
17	245/45R17		99	V	XL	BSW	8J		775	340	CN
17	205/50R17		93	V	XL	BSW	6 1/2J		650	340	CN
17	225/50R17		94	H		BSW	7J		670	300	CN
17	215/55R17		94	H		BSW	7J		670	300	CN
17	225/60R17		103	H	XL	BSW	6 1/2J		875	340	CN
17	225/65R17		102	S		BSW	6 1/2J		850	300	CN
18	225/40R18		92	H	XL	BSW	8J		630	340	CN
18	225/45R18		95	V	XL	BSW	7 1/2J		690	340	CN
18	235/50R18		101	V	XL	BSW	7 1/2J		825	340	CN

HW02



Specially developed HW02 employs a special pattern construction and tread compound to enhance driving safety and performance in extreme winter weather conditions.



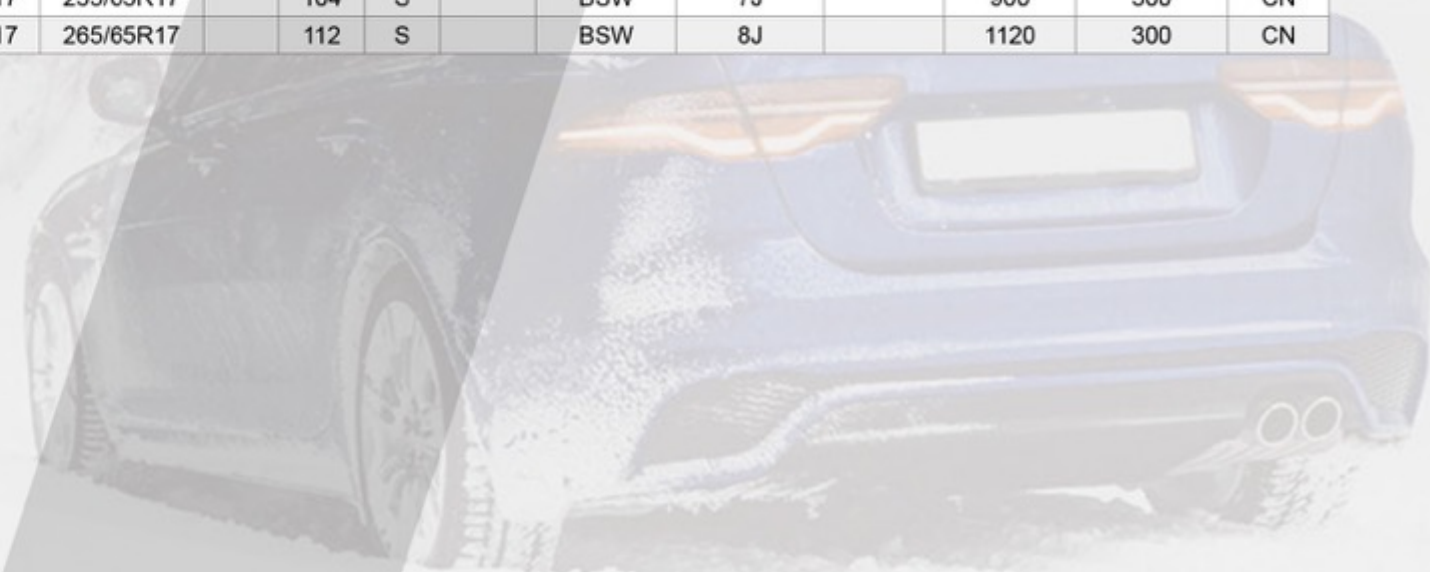
PATTERN DESIGN & FEATURES

Product Design	Product Performance
	Winter Tread The tread utilizes a winter specific compound that provides consistent performance for winter weather driving.
	Ice Grip The tread studs are designed in a pattern to provide better performance on ice and reduce tire vibration.
	Winter Design This directional pattern is equipped with dense sipes to deliver excellent performance in all winter conditions.

SIZES



RIM	SIZE	PR	LI	SS	XL OR NOT	SIDEWALL	STANDARD RIM	UTQG	MAX LOAD (kg)	PRESSURE (kpa)	PLANT
13	175/70R13		82	T		BSW	5.00B		475	300	CN
14	175/65R14		82	H		BSW	5J		475	300	CN
14	185/65R14		86	T		BSW	5 1/2J		530	300	CN
14	175/70R14		88	T	XL	BSW	5J		560	340	CN
14	185/70R14		92	T	XL	BSW	5 1/2J		630	340	CN
15	195/60R15		88	T		BSW	6J		560	300	CN
15	185/65R15		88	T		BSW	5 1/2J		560	300	CN
15	195/65R15		91	T		BSW	6J		615	300	CN
15	205/65R15		94	H		BSW	6J		670	300	CN
15	205/70R15		96	T		BSW	6J		710	300	CN
16	205/55R16		91	H		BSW	6 1/2J		615	300	CN
16	205/60R16		96	H	XL	BSW	6J		710	340	CN
16	215/60R16		99	H	XL	BSW	6 1/2J		775	340	CN
16	215/65R16		98	H		BSW	6 1/2J		750	300	CN
16	215/70R16		100	S		BSW	6 1/2J		800	300	CN
17	215/50R17		91	T		BSW	7J		615	300	CN
17	215/60R17		96	S		BSW	6 1/2J		710	300	CN
17	225/65R17		102	S		BSW	6 1/2J		850	300	CN
17	235/65R17		104	S		BSW	7J		900	300	CN
17	265/65R17		112	S		BSW	8J		1120	300	CN



HW03



All new cold and soft tread compound improves grip on icy and wet roads. The optimized traction performance is designed to improve overall driving safety.



PATTERN DESIGN & FEATURES

Product Design	Product Performance
	Stud Arrangement The 12 row stud arrangement increases grip distribution and traction to reduce skidding for an overall safer drive in winter weather conditions.
	Winter Handling The triangular serrated edges on the sides of the groove and large contact area effectively improve grip on ice and snow.
	Tread Design The unique sipe design offers excellent grip on ice while the tread compound maintains softness in extreme cold for greater driving capabilities on ice and snow.

SIZES






RIM	SIZE	PR	LI	SS	XL OR NOT	SIDEWALL	STANDARD RIMM	UTQG	MAX LOAD (kg)	PRESSURE (kpa)	PLANT
15	185/55R15		82	T		BSW	6J		475	300	CN
15	195/55R15		85	H		BSW	6J		515	300	CN
15	185/60R15		84	T		BSW	5 1/2J		500	300	CN
15	175/65R15		84	T		BSW	5J		500	300	CN
15	215/70R15		98	T		BSW	6 1/2J		750	300	CN
16	215/55R16		97	H	XL	BSW	7J		730	340	CN
16	225/60R16		98	T		BSW	6 1/2J		750	300	CN
16	205/65R16		95	T		BSW	6J		690	300	CN
16	225/65R16		100	T		BSW	6 1/2J		800	300	CN
16	235/65R16		103	T		BSW	7J		875	300	CN
17	215/45R17		91	T	XL	BSW	7J		615	340	CN
17	225/45R17		94	H	XL	BSW	7 1/2J		670	340	CN
17	235/45R17		97	T	XL	BSW	8J		730	340	CN
17	205/50R17		93	H	XL	BSW	6 1/2J		650	340	CN
17	225/50R17		98	H	XL	BSW	7J		750	340	CN
17	215/55R17		94	T		BSW	7J		670	300	CN
17	225/55R17		97	T		BSW	7J		730	300	CN
17	235/55R17		99	H		BSW	7 1/2J		775	300	CN
17	225/60R17		99	T		BSW	6 1/2J		775	300	CN
17	235/60R17		102	T		BSW	7J		850	300	CN
17	215/65R17		99	T		BSW	6 1/2J		775	300	CN
18	225/40R18		92	H	XL	BSW	8J		630	340	CN
18	245/40R18		97	H	XL	BSW	8 1/2J		730	340	CN
18	215/45R18		93	H	XL	BSW	7J		650	340	CN
18	225/45R18		95	T	XL	BSW	7 1/2J		690	340	CN
18	235/50R18		101	H	XL	BSW	7 1/2J		825	340	CN
18	215/55R18		95	T		BSW	7J		690	300	CN
18	225/55R18		98	T		BSW	7J		750	300	CN
18	225/60R18		100	T		BSW	6 1/2J		800	300	CN

HS01

Specially designed UHP SUV tire.



PATTERN DESIGN & FEATURES

Product Design	Product Performance
	<p>Safety The center rib design provides greater traction for safer acceleration and braking.</p>
	<p>Wear Resistance The silicon compound tread improves wear resistance.</p>
	<p>Comfortable Ride The tread block pitch and built-in sipes reduce tire vibration and noise for a more comfortable ride.</p>

SIZES



RIM	SIZE	PR	LI	SS	XL OR NOT	SIDEWALL	STANDARD RIM	UTQG	MAX LOAD (kg)	PRESSURE (kpa)	PLANT
17	235/55R17		103	W	XL	BSW	7 1/2J	280/AA/A	875	340	CN
18	275/40R18		103	W	XL	BSW	9 1/2J	280/AA/A	875	340	CN
18	235/50R18		97	V		BSW	7 1/2J	280/AA/A	730	300	CN
18	225/55R18		102	W	XL	BSW	7J	280/AA/A	850	340	CN
18	235/55R18		104	W	XL	BSW	7 1/2J	280/AA/A	900	340	CN
18	255/55R18		109	Y	XL	BSW	8J	280/AA/A	1030	340	CN
18	225/60R18		100	V		BSW	6 1/2J	280/AA/A	800	300	CN
18	235/60R18		107	W	XL	BSW	7J	280/AA/A	975	340	CN
18	245/60R18		105	V		BSW	7J	280/AA/B	925	300	CN
18	255/60R18		112	V	XL	BSW	7 1/2J	280/AA/B	1120	340	CN
18	265/60R18		110	V		BSW	8J	280/AA/B	1060	300	CN
19	225/45R19		96	W	XL	BSW	7 1/2J	280/AA/A	710	340	CN
19	265/50R19		110	Y	XL	BSW	8 1/2J	280/AA/A	1060	340	CN
19	235/55R19		101	W		BSW	7 1/2J	280/AA/A	825	300	CN
19	245/55R19		103	V		BSW	7 1/2J	280/AA/A	875	300	CN
19	255/55R19		111	Y	XL	BSW	8J	280/AA/A	1090	340	CN
20	275/35R20		102	W	XL	BSW	9 1/2J	280/AA/A	850	340	CN
20	295/35R20		105	Y	XL	BSW	10 1/2J	280/AA/A	925	340	CN
20	255/40R20		101	Y	XL	BSW	9J	280/AA/A	825	340	CN
20	285/40R20		104	Y		BSW	10J	280/AA/A	900	300	CN
20	255/45R20		105	Y	XL	BSW	8 1/2J	280/AA/A	925	340	CN
20	255/50R20		109	Y	XL	BSW	8J	280/AA/A	1030	340	CN
20	265/50R20		111	Y	XL	BSW	8 1/2J	280/AA/A	1090	340	CN
20	285/50R20		116	W	XL	BSW	9J	280/AA/A	1250	340	CN
20	255/55R20		110	Y	XL	BSW	8J	280/AA/A	1060	340	CN
20	275/55R20		117	W	XL	BSW	8 1/2J	280/AA/A	1285	340	CN
20	275/60R20		119	V	XL	BSW	8J	280/AA/B	1360	340	CN
21	275/45R21		110	Y	XL	BSW	9J	280/AA/A	1060	340	CN
22	305/40R22		114	W	XL	BSW	11J	280/AA/A	1180	340	CN
22	285/45R22		114	W	XL	BSW	9 1/2J	280/AA/A	1180	340	CN
22	305/45R22		118	W	XL	BSW	10J	280/AA/A	1320	340	CN

HISCEND-H

Tire Direct
La nueva generación

**BLACKHAWK
TIRE**

HS02

A UHP sport SUV product with an offset lateral arrangement block pattern and fine groove design that effectively reduce noise and improve driving comfort.



PATTERN DESIGN & FEATURES

Product Design

Product Performance



Safety

The wide center rib design offers great traction when accelerating and braking for a safe driving experience.



Wear Resistance

The greater ratio of grooves provide better drainage capabilities for improved handling and grip in wet weather conditions. The tread compound also provides greater wet grip and reduces rolling resistance.



Block Design

An optimized pitch and sipe pattern arrangement effectively reduce noise for a more comfortable ride.

SIZES



RIM	SIZE	PR	LI	SS	XL OR NOT	SIDEWALL	STANDARD RIM	UTQG	MAX LOAD (kg)	PRESSURE (kpa)	PLANT
17	255/60R17		106	H		BSW	7 1/2J	500/A/A	950	300	CN
18	235/50R18		97	V		BSW	7 1/2J	280/AA/A	730	300	CN
18	225/60R18		100	V		BSW	6 1/2J	500/A/A	800	300	CN
19	235/50R19		103	W	XL	BSW	7 1/2J	500/A/A	875	340	CN
19	235/55R19		101	W		BSW	7 1/2J	500/A/A	825	300	CN
19	245/55R19		103	V		BSW	7 1/2J	280/AA/A	875	300	CN
22	305/40R22		114	W	XL	BSW	11J	280/AA/A	1180	340	CN
18	235/50RF18		97	V		BSW	7 1/2J	280/A/A	730	300	CN
18	255/55RF18		105	H		BSW	8J	280/A/A	925	300	CN



HT01

High performance SUV and light truck tire with excellent durability and handling efficiency.



PATTERN DESIGN & FEATURES

Product Design	Product Performance
	Tread Formula Special tread formula improves abrasion resistance and grip for better handling.
	Safety Wide tread grooves and small cut block grooves ensure a safe ride by effectively draining water for better traction.
	Sidewall Design The sidewall structure and ladder-like grooves on the shoulder allow the tire to conquer any challenge on both paved and un-paved roads.

SIZES

RIM	SIZE	PR	LI	SS	XL OR NOT	SIDEWALL	STANDARD RIM	UTQG	MAX LOAD (kg)	PRESSURE (kpa)	PLANT
15	205/70R15		96	S		BSW	6J	700/A/B	710	300	CN
15	225/70R15		100	S		BSW	6 1/2J	700/A/B	800	300	CN/VN
15	215/75R15		100	T		BSW	6J	700/A/B	800	300	CN
15	235/75R15		105	S		BSW	6 1/2J	700/A/B	925	300	CN/VN
16	215/65R16		98	T		BSW	6 1/2J	700/A/B	750	300	CN/VN
16	235/65R16C	10PR	121/119	R		BSW	7J		1450/1360	575	VN
16	215/70R16		100	H		BSW	6 1/2J	700/A/B	800	300	CN
16	215/70R16		100	T		BSW	6 1/2J	700/A/B	800	300	CN/VN
16	225/70R16		103	S		BSW	6 1/2J	700/A/B	875	300	CN/VN
16	235/70R16		106	H		BSW	7J	700/A/B	950	300	CN
16	235/70R16		106	T		BSW	7J	700/A/B	950	300	CN/VN/KH
16	245/70R16		107	S		BSW	7J	700/A/A	975	300	CN/VN
16	255/70R16		111	T		BSW	7 1/2J	700/A/B	1090	300	CN/VN
16	265/70R16		112	T		BSW	8J	700/A/B	1120	300	CN/VN
16	225/75R16		104	S		BSW	6J	700/A/B	900	300	CN/VN
16	LT225/75R16	10PR	115/112	S		BSW	6J		1215/1120	550	VN
16	245/75R16		111	T		BSW	7J	700/A/B	1090	300	CN/VN
16	LT245/75R16	10PR	120/116	Q		BSW	7J		1400/1250	550	CN
16	LT245/75R16	10PR	120/116	S		BSW	7J		1400/1250	550	VN
16	265/75R16		116	T		BSW	7 1/2J	700/A/B	1250	300	CN/VN
16	LT265/75R16	10PR	123/120	S		BSW	7 1/2J		1550/1400	550	VN
16	LT215/85R16	10PR	115/112	S		BSW	6J		1215	550	VN
16	LT235/85R16	10PR	120/116	S		BSW	6 1/2J		1400/1250	550	CN/VN
17	225/60R17		99	H		BSW	6 1/2J	700/A/A	775	300	CN/VN
17	225/65R17		102	S		BSW	6 1/2J	700/A/B	850	300	VN/KH
17	225/65R17		102	T		BSW	6 1/2J	700/A/B	850	300	CN
17	235/65R17		104	S		BSW	7J	700/A/B	900	300	CN/VN
17	235/65R17		104	T		BSW	7J	700/A/B	900	300	CN/VN
17	245/65R17		107	T		BSW	7J	700/A/B	975	300	CN/VN
17	265/65R17		112	H		BSW	8J	700/A/B	1120	300	CN/VN
17	265/65R17		112	T		BSW	8J	700/A/B	1120	300	CN
17	245/70R17		110	T		BSW	7J	700/A/B	1060	300	CN/VN
17	LT245/70R17	10PR	119/116	R		BSW	7J		1360/1250	550	VN
17	265/70R17		115	T		BSW	8J	700/A/B	1215	300	CN/VN
17	LT265/70R17	10PR	121/118	Q		BSW	8J		1450/1320	550	CN/VN
17	235/75R17		109	S		BSW	6 1/2J	700/A/B	1030	300	CN/VN
17	LT245/75R17	10PR	121/118	S		BSW	7J		1450	550	VN
17	LT235/80R17	10PR	120/117	R		BSW	6 1/2J		1400/1285	550	VN
18	235/55R18		100	T		BSW	7 1/2J	700/A/A	800	300	CN/VN
18	235/55R18		100	V		BSW	7 1/2J	700/A/A	800	300	CN
18	235/60R18		107	V	XL	BSW	7J	700/A/B	975	340	VN
18	245/60R18		105	H		BSW	7J	700/A/B	925	300	CN/VN
18	265/60R18		110	H		BSW	8J	700/A/B	1060	300	CN
18	265/60R18		110	T		BSW	8J	700/A/B	1060	300	CN/VN
18	235/65R18		106	T		BSW	7J	700/A/B	950	300	VN
18	255/65R18		111	S		BSW	7 1/2J	700/A/B	1090	300	VN
18	265/65R18		114	H		BSW	8J	700/A/B	1180	300	VN
18	275/65R18		116	T		BSW	8J	700/A/B	1250	300	CN/VN
18	255/70R18		113	T		BSW	7 1/2J	700/A/B	1150	300	CN/VN
19	225/55R19		99	V		BSW	7J	700/A/B	775	300	VN
19	235/55R19		101	V		BSW	7 1/2J	700/A/B	825	300	VN
19	245/55R19		103	H		BSW	7 1/2J	700/A/B	875	300	VN
20	275/45R20		110	H	XL	BSW	9J	700/A/A	1060	340	CN/VN
20	255/50R20		105	H		BSW	8J	700/A/B	925	300	VN
20	265/50R20		107	V		BSW	8 1/2J	700/A/B	975	300	VN
20	275/55R20		113	H		BSW	8 1/2J	700/A/A	1150	300	CN/VN
20	275/60R20		115	S		BSW	8J	700/A/B	1215	300	CN/VN

HA01

An all-terrain off-road tire suitable for pickup trucks and SUVs, boasting strong off-road performance while also offering great on-road handling and driving comfort.



PATTERN DESIGN & FEATURES

Product Design	Product Performance
	<p>Tread Compound The tread compound is specially designed to improve grip and handling on wet and dry surfaces, while also improving tread life.</p>
	<p>Noise Emission Unique pattern design enhances driving stability and effectively reduces noise for a greater driving experience.</p>
	<p>Sidewall Design The sidewall is designed to withstand scratches and bumps common in off-road applications.</p>

SIZES



RIM	SIZE	PR	LI	SS	XL OR NOT	SIDEWALL	STANDARD RINM	UTQG	MAX LOAD (kg)	PRESSURE (kpa)	PLANT
15	LT215/75R15	6PR	100/97	S		OWL	6J		800/730	350	CN
15	LT225/75R15	6PR	102/99	S		OWL	6J		850/775	350	CN
15	LT235/75R15	6PR	104/101	S		OWL	6 1/2J		900/825	350	CN
15	235/75R15		109	S	XL	OWL	6 1/2J	700/A/B	1030	340	CN
15	31x10.50R15LT	6PR	109	S		OWL	8 1/2J		1030	350	CN
16	215/70R16		100	S		OWL	6 1/2J	700/A/B	800	300	CN
16	LT235/70R16	6PR	104/101	T		OWL	7J		900/825	350	CN
16	235/70R16		106	S		OWL	7J	700/A/B	950	300	CN
16	LT245/70R16	6PR	106/103	T		OWL	7J		950/875	350	CN
16	245/70R16		107	S		OWL	7J	700/A/B	975	300	CN
16	255/70R16		111	S		OWL	7 1/2J	700/A/B	1090	300	CN
16	265/70R16		112	S		OWL	8J	700/A/B	1120	300	CN
16	265/70R16		112	T		OWL	8J	700/A/B	1120	300	CN
16	LT265/70R16	8PR	117/114	S		OWL	8J		1285/1180	450	CN
16	LT225/75R16	10PR	115/112	S		OWL	6J		1215/1120	550	CN
16	LT245/75R16	10PR	120/116	Q		OWL	7J		1400/1250	550	CN
16	LT265/75R16	10PR	123/120	Q		OWL	7 1/2J		1550/1400	550	CN
16	LT285/75R16	10PR	126/123	R		OWL	8J		1700/1550	550	CN
16	LT235/85R16	10PR	120/116	S		OWL	6 1/2J		1400/1250	550	CN
17	225/65R17		102	T		OWL	6 1/2J	700/A/B	850	300	CN
17	235/65R17		104	T		OWL	7J	700/A/B	900	300	CN
17	245/65R17		107	S		OWL	7J	700/A/B	975	300	CN
17	LT265/65R17	10PR	120/117	R		OWL	8J		1400/1285	550	CN
17	285/65R17		116	H		OWL	8 1/2J	700/A/B	1250	300	CN
17	245/70R17		110	S		OWL	7J	700/A/B	1060	300	CN
17	LT245/70R17	10PR	119/116	R		OWL	7J		1380/1250	550	CN
17	265/70R17		115	T		OWL	8J	700/A/B	1215	300	CN
17	LT265/70R17	10PR	121/118	Q		OWL	8J		1450/1320	550	CN
17	LT285/70R17	10PR	121/118	S		OWL	8 1/2J		1450/1320	550	CN
17	LT235/80R17	10PR	120/117	R		OWL	6 1/2J		1400/1285	550	CN
18	245/60R18		105	T		OWL	7J	700/A/B	925	300	CN
18	265/60R18		110	T		OWL	8J	700/A/B	1060	300	CN
18	255/65R18		111	S		OWL	7 1/2J	700/A/B	1090	300	CN
18	275/65R18		116	T		OWL	8J	700/A/B	1250	300	CN
18	LT275/65R18	10PR	123/120	S		OWL	8J		1550/1400	550	CN
20	265/50R20		111	T	XL	BSW	8 1/2J	700/A/A	1090	340	CN
20	265/50R20		111	T	XL	OWL	8 1/2J	700/A/A	1090	340	CN
20	275/55R20		117	H	XL	OWL	8 1/2J	700/A/A	1285	340	CN
20	LT275/65R20	10PR	126/123	S		OWL	8J		1700/1550	550	CN

HA11

An all-terrain off-road tire suitable for pickup trucks and SUVs, boasting strong off-road performance while also offering great on-road handling and driving comfort. All HA11 LT sizes are 3PMSF certified to ensure safer driving in extreme winter weather conditions.



TRACTION



CROSS-COUNTRY



RESILIENT



WEAR RESISTANCE



M+S

PATTERN DESIGN & FEATURES

Product Design

Product Performance



Tread Compound

The tread compound is designed to improve grip, handling on wet and dry surfaces, and also offer a longer tire life.



Tread Pattern

The unique pattern design enhances driving stability and effectively reduces noise for a greater driving experience.



Sidewall Design

The sidewall is designed to withstand scratches and bumps common in off-road applications.

SIZES



RIM	SIZE	PR	LI	SS	XL OR NOT	SIDEWALL	STANDARD RINM	UTQG	MAX LOAD (kg)	PRESSURE (kpa)	PLANT
15	235/75R15		109	S	XL	OWL	6 1/2J	500/A/B	1030	340	VN
15	LT235/75R15	8PR	110/107	S		OWL	6 1/2J		1060	450	VN
15	31x10.50R15LT	6PR	109	S		OWL	8 1/2J		1030	350	VN
16	235/70R16		106	S		OWL	7J	500/A/B	950	300	VN
16	265/70R16		112	T		OWL	8J	500/A/B	1120	300	VN
16	LT225/75R16	10PR	115/112	S		BSW	6J		1215/1120	550	VN
16	245/75R16		111	S		OWL	7J	500/A/B	1090	300	VN
16	LT245/75R16	10PR	120/116	S		BSW	7J		1380/1260	550	VN
16	265/75R16		116	S		OWL	7 1/2J	500/A/B	1250	300	VN
16	LT265/75R16	10PR	123/120	S		OWL	7 1/2J		1550/1400	550	VN
16	LT285/75R16	10PR	126/123	S		OWL	8J		1700/1550	550	VN
16	LT235/85R16	10PR	120/116	S		BSW	6 1/2J		1380/1260	550	VN
17	245/65R17		107	S		OWL	7J	500/A/B	975	300	VN
17	265/65R17		112	S		OWL	8J	500/A/B	1120	300	VN
17	LT245/70R17	10PR	119/116	S		OWL	7J		1360/1250	550	VN
17	255/70R17		112	S		OWL	7 1/2J	500/A/B	1120	300	VN
17	265/70R17		115	S		OWL	8J	500/A/B	1215	300	VN
17	LT265/70R17	10PR	121/118	S		OWL	8J		1450/1320	550	VN
17	LT285/70R17	10PR	121/118	S		OWL	8 1/2J		1450/1320	550	VN
17	LT245/75R17	10PR	121/118	S		OWL	7J		1450/1320	550	VN
17	LT235/80R17	10PR	120/117	R		OWL	6 1/2J		1400/1285	550	VN
18	275/65R18		116	T		OWL	8J	500/A/B	1250	300	VN
18	LT275/65R18	10PR	123/120	S		OWL	8J		1550/1400	550	VN
18	LT265/70R18	10PR	124/121	R		BSW	8J		1600/1450	550	VN
18	LT275/70R18	10PR	125/122	R		OWL	8J		1650/1500	550	VN
20	275/55R20		117	T	XL	BSW	8 1/2J	500/A/B	1285	340	VN
20	275/60R20		115	T		BSW	8J	500/A/B	1215	300	VN
20	LT275/65R20	10PR	126/123	S		BSW	8J		1700/1550	550	VN

HM01

The HM01 is specially designed for cross-country enthusiasts.



PATTERN DESIGN & FEATURES

Product Design	Product Performance
	<p>Strengthened Carcass The three ply carcass makes this tire extremely strong and capable of handling strong impacts.</p>
	<p>Shoulder Blocks The large shoulder block design vastly enhances the handling performance on muddy and rocky roads.</p>
	<p>Sidewall Design The shield-like design extending up from the sidewall improves traction and further protects the sidewall from damage.</p>
	<p>Shoulder Grooves Wide and deep shoulder grooves effectively eject mud and rocks while also improving grip in rugged terrain.</p>

SIZES






RIM	SIZE	PR	LI	SS	XL OR NOT	SIDEWALL	STANDARD RINM	UTQG	MAX LOAD (kg)	PRESSURE (kpa)	PLANT
15	LT235/75R15	6PR	104/101	Q		OWL	6 1/2J		900/825	350	CN
15	30x9.50R15LT	6PR	104	Q		OWL	7 1/2J		900	350	CN
15	33x12.50R15LT	6PR	108	Q		OWL	10J		1000	250	CN
15	31x10.50R15LT	6PR	109	Q		OWL	8 1/2J		1030	350	CN
15	35x12.50R15LT	6PR	113	Q		OWL	10J		1150	250	CN
16	LT245/75R16	10PR	120/116	Q		OWL	7J		1380/1260	550	CN
16	LT265/75R16	10PR	123/120	Q		OWL	7 1/2J		1550/1400	550	CN
16	LT235/85R16	10PR	120/116	Q		OWL	6 1/2J		1380/1260	550	CN
17	LT265/65R17	10PR	120/117	Q		OWL	8J		1400/1285	550	CN
17	LT265/70R17	10PR	121/118	Q		OWL	8J		1450/1320	550	CN
17	LT285/70R17	10PR	121/118	Q		OWL	8 1/2J		1450/1320	550	CN
17	33x12.50R17LT	8PR	114	Q		OWL	10J		1180	350	CN
17	35x12.50R17LT	10PR	121	Q		OWL	10J		1450	450	CN
18	33x12.50R18LT	10PR	118	Q		BSW	10J		1320	450	CN
18	35x12.50R18LT	10PR	123	Q		BSW	10J		1550	450	CN
20	LT305/55R20	10PR	121/118	Q		BSW	9 1/2J		1450/1320	450	CN
20	33x12.50R20LT	10PR	114	Q		BSW	10J		1180	450	CN
20	35x12.50R20LT	10PR	121	Q		BSW	10J		1450	450	CN

HLO2

Long-running tire with flexible handling designed specifically for light trucks.



PATTERN DESIGN & FEATURES

Product Design	Product Performance
	<p>Carrying Capacity This tire is designed with a reinforced carcass to improve its load bearing capability.</p>
	<p>Wet Performance Three main grooves effectively eject water for improved grip on wet roads.</p>
	<p>Tread Life The tread composition and pattern design is optimized to improve wear resistance for a longer service life.</p>

SIZES



RIM	SIZE	PR	LI	SS	XL OR NOT	SIDEWALL	STANDARD RINM	UTQG	MAX LOAD (kg)	PRESSURE (kpa)	PLANT
15	6.50R15LT	10PR	106/101	N		BSW	5.50F		950/825	560	CN
16	6.50R16LT	10PR	107/102	N		BSW	5.50F		975/850	560	CN
16	7.00R16LT	12PR	115/110	N		BSW	5.50F		1215/1060	670	CN








HLO3

Specially designed pattern for commercial light trucks, minivans, and minibuses that offers outstanding handling on wet surfaces as well as excellent high speed durability.



PATTERN DESIGN & FEATURES

Product Design	Product Performance
	<p>Driving Comfort The tread has a varied pitch design created to reduce noise and allow for a better driving experience.</p>
	<p>Tread Pattern Original pattern design ensures excellent performance and greater driving comfort on wet and dry roads.</p>
	<p>Tread Design Wide and deep grooves increase wear resistance, efficiently drain water, and provide greater handling stability.</p>



SIZES

RIM	SIZE	PR	LI	SS	XL OR NOT	SIDEWALL	STANDARD RINM	UTQG	MAX LOAD (kg)	PRESSURE (kpa)	PLANT
12	145R12C	8PR	86/84	P		BSW	4.00B		530/500	450	CN
12	155R12C	8PR	88/86	P		BSW	4.50B		560/530	450	CN
13	165/70R13C	6PR	88/86	Q		BSW	5.00B		560/530	375	CN
13	155R13C	6PR	85/83	Q		BSW	4.50B		515/487	350	CN
13	165R13C	8PR	94/93	S		BSW	4.50B		670/650	450	CN
13	175R13C	8PR	97/95	S		BSW	5.00B		730/690	450	CN
14	175/65R14C	6PR	90/88	T		BSW	5J		600/560	375	CN
14	175/70R14C	6PR	95/93	Q		BSW	5J		690/650	375	CN
14	205/75R14C	8PR	109/107	Q		WR	5 1/2J		1030/975	475	CN
14	175R14C	8PR	99/98	Q		BSW	5J		775/750	450	CN
14	185R14C	8PR	102/100	Q		BSW	5 1/2J		850/800	450	CN
14	195R14C	8PR	106/104	Q		BSW	5 1/2J		950/900	450	CN
14	195R14C	8PR	106/104	Q		WR	5 1/2J		950/900	450	CN
14	205R14C	8PR	109/107	R		BSW	6J		1030/975	450	CN
15	205/65R15C	6PR	102/100	R		BSW	6J		850/800	375	CN
15	195/70R15C	8PR	104/102	R		BSW	6J		900/850	450	CN
15	205/70R15C	8PR	106/104	R		BSW	6J		950/900	450	CN
15	205/70R15C	10PR	109/107	R		BSW	6J		1030/975	550	CN
15	215/70R15C	8PR	109/107	S		BSW	6 1/2J		1030/975	450	CN
15	225/70R15C	8PR	112/110	R		BSW	6 1/2J		1120/1060	450	CN
15	185R15C	8PR	103/102	R		BSW	5 1/2J		875/850	450	CN
15	195R15C	8PR	106/104	R		BSW	5 1/2J		950/900	450	CN
15	195R15C	8PR	106/104	R		WR	5 1/2J		950/900	450	CN
15	215R15C	8PR	109/107	R		WR	6J		1030/975	450	CN
16	195/60R16C	6PR	99/97	T		BSW	6J		775/730	375	CN
16	215/60R16C	8PR	108/106	T		BSW	6 1/2J		1000/950	475	CN
16	195/65R16C	8PR	104/102	R		BSW	6J		900/850	475	CN
16	205/65R16C	8PR	107/105	R		BSW	6J		975/925	475	CN
16	215/65R16C	8PR	109/107	R		BSW	6 1/2J		1030/975	475	CN
16	225/65R16C	8PR	112/110	R		BSW	6 1/2J		1120/1060	475	CN
16	235/65R16C	8PR	115/113	R		BSW	7J		1215/1150	475	CN
16	215/70R16C	6PR	108/106	Q		BSW	6 1/2J		1000/950	375	CN
16	185/75R16C	8PR	104/102	R		BSW	5J		900/850	475	CN
16	195/75R16C	8PR	107/105	R		BSW	5 1/2J		975/925	475	CN
16	195/75R16C	10PR	110/108	R		BSW	5 1/2J		1060/1000	525	CN
16	205/75R16C	8PR	110/108	R		BSW	5 1/2J		1060/1000	475	CN
16	205/75R16C	10PR	113/111	R		BSW	5 1/2J		1150/1090	525	CN
16	215/75R16C	10PR	116/114	R		BSW	6J		1250/1180	525	CN
16	225/75R16C	10PR	121/120	R		BSW	6J		1450/1400	575	CN
16	175R16C	8PR	101/99	R		BSW	5J		825/775	450	CN
16	205R16C	8PR	110/108	R		BSW	6J		1060/1000	450	CN
17	225/70R17C	6PR	112/110	R		BSW	6 1/2J		1120/1060	375	CN

HC31

The HC31 is an economic pattern offering a deep tread and improved contour design for overall improved performance and service life.



WEAR RESISTANCE



HANDLING



PUNCTURE RESISTANT



RESILIENT

PATTERN DESIGN & FEATURES

Product Design

Product Performance



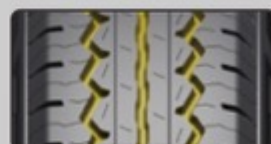
Overall Performance

The tread is designed to increase ground contact area for improved handling and durability.



Service Life

The optimized tread contour and internal structure design effectively reduce heat buildup to effectively improve service life.



Safety

Tread grooves effectively eject water and reduce stone retention for improved grip, driving comfort, and overall safety.

SIZES



RIM	SIZE	PR	LI	SS	XL OR NOT	SIDEWALL	STANDARD RINM	UTQG	MAX LOAD (kg)	PRESSURE (kpa)	PLANT
14	185R14C	8PR	102/100	Q		BSW	5 1/2J		850/800	450	CN
14	185R14C	8PR	102/100	Q		WR	5 1/2J		850/800	450	CN
14	195R14C	8PR	106/104	Q		BSW	5 1/2J		950/900	450	CN
14	195R14C	8PR	106/104	Q		WR	5 1/2J		950/900	450	CN
15	195R15C	8PR	106/104	R		BSW	5 1/2J		950/900	450	CN
15	195R15C	8PR	106/104	R		WR	5 1/2J		950/900	450	CN
15	205/70R15C	8PR	106/104	R		BSW	6J		950/900	450	CN
15	205/70R15C	8PR	106/104	R		WR	6J		950/900	450	CN

HW06

The z-shaped main groove and sipe pattern improve traction on ice and snow. The quantity and position of the studs strengthen tire grip for improved safety in winter.



PATTERN DESIGN & FEATURES

Product Design	Product Performance
	Winter Performance The Z-shaped main grooves improve traction, prevent skidding, and reduce noise while driving on ice and snow.
	Groove Design Jagged groove edges bite into ice and snow for improved grip and traction performance.
	Stud Arrangement The number and locations of studs are designed to maximize tire grip and improve skid resistance.

SIZES



RIM	SIZE	PR	LI	SS	XL OR NOT	SIDEWALL	STANDARD RINM	UTQG	MAX LOAD (kg)	PRESSURE (kpa)	PLANT
15	235/75R15		105	S		BSW	6 1/2J		925	300	CN
16	225/70R16		103	S		BSW	6 1/2J		875	300	CN
16	235/70R16		106	S		BSW	7J		950	300	CN
16	245/70R16		107	S		BSW	7J		975	300	CN
16	LT225/75R16	10PR	115/112	Q		BSW	6J		1215/1120	550	CN
16	245/75R16		111	S		BSW	7J		1090	300	CN
16	LT245/75R16	10PR	120/116	Q		BSW	7J		1380/1260	550	CN
17	245/65R17		107	S		BSW	7J		975	300	CN
17	245/70R17		110	S		BSW	7J		1060	300	CN
17	LT245/70R17	10PR	119/116	Q		BSW	7J		1360/1250	550	CN
17	265/70R17		115	S		BSW	8J		1215	300	CN
17	LT265/70R17	10PR	121/118	Q		BSW	8J		1450/1320	550	CN
17	LT245/75R17	10PR	121/118	R		BSW	7J		1450/1320	550	CN
18	235/55R18		100	T		BSW	7 1/2J		800	300	CN
18	255/55R18		105	T		BSW	8J		925	300	CN
18	235/60R18		107	T	XL	BSW	7J		975	340	CN
18	245/60R18		105	T		BSW	7J		925	300	CN
18	265/60R18		110	T		BSW	8J		1060	300	CN
18	235/65R18		108	T		BSW	7J		950	300	CN
18	275/65R18		116	S		BSW	8J		1250	300	CN
18	LT275/65R18	10PR	123/120	R		BSW	8J		1550/1400	550	CN
18	255/70R18		113	S		BSW	7 1/2J		1150	300	CN
18	LT275/70R18	10PR	125/122	R		BSW	8J		1650/1500	550	CN
19	235/45R19		95	H		BSW	8J		690	300	CN
19	225/55R19		99	H		BSW	7J		775	300	CN
19	235/55R19		101	H		BSW	7 1/2J		825	300	CN
19	245/55R19		103	T		BSW	7 1/2J		875	300	CN
20	245/50R20		102	H		BSW	7 1/2J		850	300	CN
20	275/55R20		117	S	XL	BSW	8 1/2J		1285	340	CN
20	275/60R20		119	S	XL	BSW	8J		1360	340	CN

HW07

A winter tire specifically designed for commercial light trucks.



PATTERN DESIGN & FEATURES

Product Design	Product Performance
	Handling The wide and jagged groove design efficiently drains snow and water to improve handling in winter weather.
	Tread Design The intersecting blocks, grooves, and sipes allow for more effective braking on ice and snow.
	Comfortable Ride The tread width and block pattern ensure secure contact with the road surface to improve driving comfort.
	Grip The precision cut sipes enhance grip on ice and snow to allow for a safer driving experience.

SIZES



RIM	SIZE	PR	LI	SS	XL OR NOT	SIDEWALL	STANDARD RINM	UTQG	MAX LOAD (kg)	PRESSURE (kpa)	PLANT
14	185R14C	8PR	102/100	R		BSW	5 1/2J		850/800	450	CN
14	195R14C	8PR	106/104	R		BSW	5 1/2J		950/900	450	CN
15	195/70R15C	8PR	104/102	S		BSW	6J		900/850	450	CN
15	205/70R15C	8PR	106/104	S		BSW	6J		950/900	450	CN
15	215/70R15C	10PR	113/111	S		BSW	6 1/2J		1150/1090	525	CN
15	225/70R15C	8PR	112/110	S		BSW	6 1/2J		1120/1060	450	CN
15	195R15C	8PR	106/104	R		BSW	5 1/2J		950/900	450	CN
16	195/65R16C	8PR	104/102	T		BSW	6J		900/850	475	CN
16	205/65R16C	8PR	107/105	T		BSW	6J		975/925	475	CN
16	215/65R16C	8PR	109/107	T		BSW	6 1/2J		1030/975	475	CN
16	225/65R16C	8PR	112/110	T		BSW	6 1/2J		1120/1060	475	CN
16	235/65R16C	8PR	115/113	R		BSW	7J		1215/1150	475	CN
16	185/75R16C	8PR	104/102	R		BSW	5J		900/850	475	CN
16	195/75R16C	8PR	107/105	R		BSW	5 1/2J		975/925	475	CN
16	205/75R16C	10PR	113/111	R		BSW	5 1/2J		1150/1090	525	CN
16	215/75R16C	10PR	116/114	R		BSW	6J		1250/1180	525	CN
16	225/75R16C	10PR	118/116	R		BSW	6J		1320/1250	525	CN





Important Tips for Optimal Tire Performance :

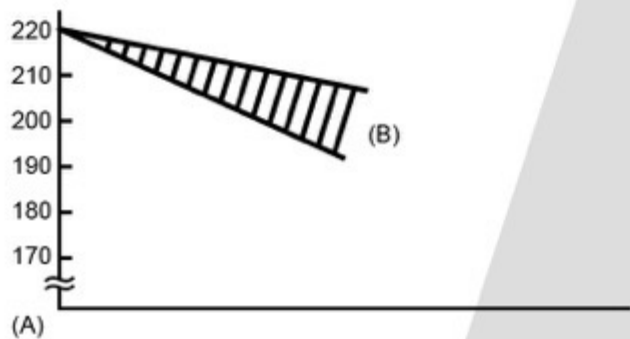
- 1 Maintain optimum air pressure
- 2 Inspect tread grooves to ensure tires are safe and legal
- 3 Visually check for tire damage

Ensure you check your tires once a month and before long trips to maintain performance and ensure safety.

Why is it important I have the correct tire pressure?

A tire at optimum air pressure should will ensure more safety, provide greater driving performance, improve tire life and reduce fuel consumption.

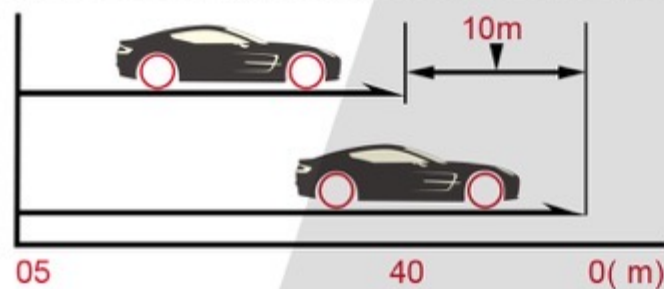
Tire air pressure decreases naturally (little by little). It is generally accepted that air pressure in tires on a passenger car decreases by 5-10% (10-20kPa) every month.



Tire size: 195/65R 15
 Starting pressure: 220kPa (100kPa=1.0kgf/cm²)
 (A) Air pressure (kPa)
 (B) Decreases by 10-20kPa a month

Dangers of Using Worn Tire

Worn tires need a longer stopping distance on wet roads.

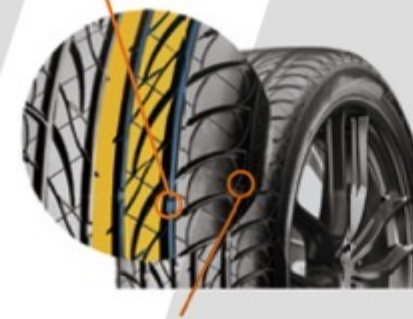


At the same speed (80km/h) and from the same braking point, there is a difference of 10 meters!
 (A) New tire
 (B) Worn tire (worn out to 1.6mm)

Why is it Important I Check for Tire Wear?

The deeper the groove, which is on the surface of the tire, the more grip a tire will have. As your tread pattern wears over time, the grip will begin to decrease. Never use a tire where even just one tread wear indicator is exposed.

TWI:Tread Wear Indicator(1.6mm)



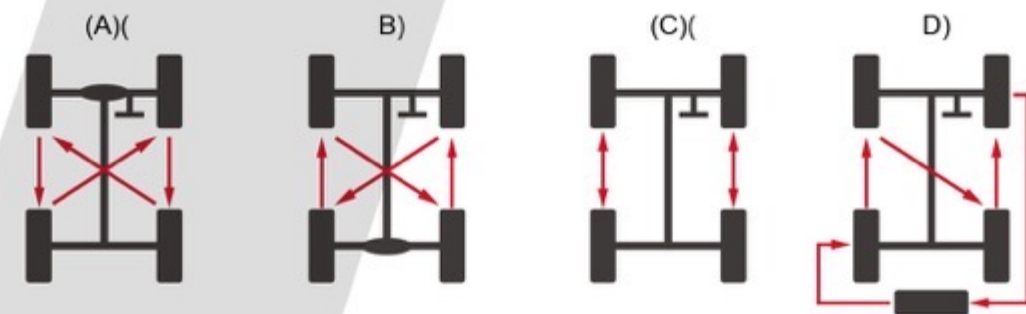
IndicatorM ark:Triangle Symbol " Δ "

<Tire Tread Wear Indicator >

What are the advantages of tire rotation?

- 1 Help Prevent Uneven Tread Wear
- 2 Extension of Tire Service Life (money in your wallet)
- 3 Averaging of Tire Fatigue

Note: The front-wheel tires of an FF vehicle wear two or three times faster than the rear-wheel tires because the front-wheel tires function for both driving and steering.



Examples of Tire Rotation

(A) FF Vehicle (B) FR Vehicle (C) Tires with Directional Patterns (D) Spare Tire Included

BLACKHAWK

THE ROAD IS YOUR PREY



EXCLUSIVELY AT

Tire Direct
La nueva generación

PASSENGER & LIGHT TRUCK TIRE CATALOG



VIETNAM



HH11
ALL-SEASON TOURING



HH01
ALL-SEASON



HU01
ULTRA HIGH PERFORMANCE ALL SEASON



HU02
ULTRA-HIGH PERFORMANCE



AGILITY SUV
PERFORMANCE CUV/SUV ALL-SEASON



HT01
PERFORMANCE HT/CUV/SUV



HA11
PREMIUM ALL-TERRAIN



RIDGECRAWLER
A/T 
PREMIUM ALL-TERRAIN

CAMBODIA



RIDGECRAWLER R/T
RUGGED TERRAIN

VIETNAM

BLACKHAWK

HH11

ALL-SEASON TOURING



HH11

ALL-SEASON TOURING

The HH11 tire is an all-season touring tire engineered to deliver exceptional handling and all-season performance. The HH11 features 4 wide circumferential grooves to help channel water away quickly and efficiently delivering excellent wet weather traction. A modern non-directional tread design provides superior road feel and handling making the HH11 the perfect everyday tire.

FEATURES

- Modern non-directional all-season tread design.
- Variable pitch tread design for low noise performance.
- Silica compound for superior wet traction and reduced rolling resistance.
- Jointless Bead Cover: spiral steel band wrapped around beads improves the structural rigidity of the tire resulting in a smooth ride.
- Higher sidewall turn-up provides improved sidewall strength and durability.



R, S AND T SPEED RATED

	Size Dimension	LI/SR IC/IV	I.R.	T.D. 32nds	UTQG
5546811V	175/70R13	82T		10	420 AA
5546809V	175/65R14	86T	XL	10	420 AA
5546810V	175/70R14	84T		10	420 AA
5546815V	185/60R14	82H		10	420 AA
5546794V	185/65R14	86H		10	420 AA
5546808V	185/70R14	88H		10	420 AA
5546802V	195/70R14	91T		10	420 AA
5546818V	185/55R15	82V		10	420 AA
5546803V	185/60R15	88H	XL	10	420 AA
5546787V	185/65R15	92H	XL	10	420 AA
5546817V	195/50R15	82V		10	420 AA
5546819V	195/55R15	85V		10	420 AA
5546783V	195/60R15	88H		10	420 AA
5546781V	195/65R15	91H		10	420 AA
5546813V	205/60R15	95H	XL	10	420 AA
5546785V	205/65R15	94H		10	420 AA
5546799V	205/70R15	96T		10	420 AA
5546814V	215/60R15	94H		10	420 AA
5546816V	215/65R15	96H		10	420 AA
5546790V	215/70R15	98T		10	420 AA
5546812V	205/50R16	87H		10	420 AB
5546779V	205/55R16	94V	XL	10	420 AA
5546779V	205/55R16	91H		10	420 AA
5546784V	205/60R16	92H		10	420 AA
5546786V	205/65R16	95H		10	420 AA
5546793V	215/55R16	97H	XL	10	420 AA
5546778V	215/60R16	95H		10	420 AA
4120167V	215/65R16	98T		10	420 AA
5546782V	225/60R16	98H		10	420 AA
5546801V	225/65R16	100H		10	420 AA
5546800V	205/50R17	89V		10	420 AA
5546820V	215/45R17	87W		10	420 AA
5546798V	215/50R17	91V		10	420 AA
5546789V	215/55R17	94V		10	420 AA
4120169V	215/60R17	96T		10	420 AA
5546796V	215/65R17	99T		10	420 AA
5546823V	225/45R17	91V		10	420 AA
5546805V	225/50R17	94V		10	420 AA
4120173V	225/55R17	97W		10	420 AA
4120173V	225/55R17	97V		10	420 AA
4120161V	225/60R17	99H		10	420 AA
4120170V	225/65R17	102H		10	420 AA
4120166V	235/60R17	102T		10	420 AA
5546821V	225/45R18	95W	XL	10	420 AA
5546822V	235/45R18	94 V		10	420 AB
4120150V	235/55R18	100V		10	420 AA
4120190V	235/60R18	103H		10	420 AA
4120563	225/50R18	95V		10	420 AA



BLACKHAWK



HH01 ALL-SEASON

The Blackhawk HH01 is an exceptional all-season tire designed to deliver reliable traction and consistent handling year-round. With exceptional durability and performance, the HH01 is the trusted tire for worry-free travel, keeping you in control on any road.

FEATURES

- Center rib enhances directional stability.
- 4 circumferential grooves disperse water and provide excellent wet handling
- Angled tread blocks increase contact patch and promote excellent grip

	Size Dimension	LI/SR IC/W	I.R.	T.D. 32nds	UTQG
5546114V	195/60R14	86H		10	420 A A
5546119V	195/65R14	89H		10	420 A A
5546117V	205/70R14	98T	XL	10	420 A A

HH01 ALL-SEASON



BLACKHAWK



HU01

ULTRA HIGH PERFORMANCE
ALL SEASON

The HU01 CHAMPOINT is an ultra-high performance all-season tire engineered for high-speed performance, cornering, and braking. The aggressive tread pattern features 4 high angle grooves to channel water away from the tread face, maximizing traction on wet surfaces. Tapered tread edges provided improved stability, even tread wear, and a quiet comfortable ride. The HU01 delivers the perfect balance between ultra-high performance and everyday comfort to give you confidence in all weather conditions.

FEATURES

- Solid center rib for improved high-speed stability, and reduced road noise.
- Silica compound for superior wet traction and reduced rolling resistance.
- High angle tread grooves enhance water evacuation and improve wet handling and hydroplane resistance.
- Taper tread edges promote even uniform contact pressure for increased stability, even wear and a quiet ride.
- 4 wide circumferential grooves enhance water drainage to maximize grip on wet surfaces



V AND W SPEED RATED

	Size Dimension	LI/SR IC/W	LR.	T.D. 32nds	UTQG
5546812V	205/50R16	87W	SL	10	480 AA A
5546779V	205/55R16	91W	SL	10	480 AA A
5546793V	215/55R16	97W	XL	10	480 AA A
5546262V	225/50R16	92W	SL	10	480 AA A
5546244V	225/55R16	99W	XL	10	480 AA A
5546231V	205/40R17	84W	XL	10	480 AA A
5546261V	205/45R17	84W	SL	10	480 AA A
5546800V	205/50R17	93W	XL	10	480 AA A
5546820V	215/45R17	91W	XL	10	480 AA A
5546798V	215/50R17	95W	XL	10	480 AA A
5546789V	215/55R17	98W	XL	10	480 AA A
5546823V	225/45R17	94W	XL	10	480 AA A
5546805V	225/50R17	98W	XL	10	480 AA A
4120173V	225/55R17	101W	XL	10	480 AA A
5546247V	235/45R17	97W	XL	10	480 AA A
4120186V	235/55R17	99W	SL	10	480 AA A
5546251V	245/40R17	95W	XL	10	480 AA A
5546254V	245/45R17	99W	XL	10	480 AA A
5546235V	215/35R18	84W	XL	10	480 AA A
5546240V	225/40R18	92W	XL	10	480 AA A
5546821V	225/45R18	95W	XL	10	480 AA A
5546246V	235/40R18	95W	XL	10	480 AA A
4120172V	235/50R18	101W	XL	10	480 AA A
5546252V	245/40R18	97W	XL	10	480 AA A
5546255V	245/45R18	100W	XL	10	480 AA A
5546259V	255/45R18	103W	XL	10	480 AA A
5548378V	235/40R19	96V	XL	10	480 AA A
5546253V	245/40R19	98W	XL	10	480 AA A
5546256V	245/45R19	98W	XL	10	480 AA A
5546250V	245/35R20	95W	XL	10	480 AA A
5546257V	245/45R20	103W	XL	10	480 AA A
5546258V	255/35R20	97W	XL	10	480 AA A
4120181V	275/40R20	106W	XL	10	480 AA A

HU01

ULTRA HIGH PERFORMANCE
ALL SEASON



BLACKHAWK



HU02

ULTRA-HIGH PERFORMANCE

The HU02 is an ultra high performance radial tire engineered for high-performance sport coupes and sedans. The HU02 features a variable pitch tread design that provides a smooth, quiet ride while its advanced tread compound delivers superior cornering and exceptional handling.

FEATURES

- Asymmetrical tread pattern.
- Inside tread pattern is designed for water evacuation which enhances wet traction.
- Outside tread pattern is designed with larger contact areas which improves dry traction.
- Silica compound reduces heat, provides improved wet traction, braking & reduced rolling resistance.
- Jointless Bead Cover: spiral steel band wrapped around beads improves the structural rigidity of the tire resulting in a smooth ride.
- Rim protector.



V, W AND Y SPEED RATED
UTQG 300 AA A AND 400 AA A

	Size Dimension	LI/SR IC/IV	I.R.	T.D. 32nds	UTQG
5546244V	225/55R16	99W	XL	10	300 AA A
5546800V	205/50R17	93W	XL	10	300 AA A
5546267V	215/40R17	87W	XL	10	300 AA A
5546820V	215/45R17	91W	XL	10	300 AA A
5546789V	215/55R17	93W	-	10	300 AA A
5546823V	225/45R17	94W	XL	10	300 AA A
5546805V	225/50R17	98W	XL	10	300 AA A
4120173V	225/55R17	101W	XL	10	300 AA A
5546247V	235/45R17	97W	XL	10	300 AA A
5546251V	245/40R17	95W	XL	10	300 AA A
5546240V	225/40R18	92W	XL	10	300 AA A
5546246V	235/40R18	95W	XL	10	300 AA A
5546252V	245/40R18	97Y	XL	10	300 AA A
5546255V	245/45R18	100W	XL	10	300 AA A

HU02

ULTRA-HIGH PERFORMANCE



BLACKHAWK



AGILITY SUV PERFORMANCE CUV/SUV ALL-SEASON

Blackhawk AGILITY SUV tires are designed for drivers who demand more from their suvs. The SUV market continues to grow and the AGILITY SUV is engineered to enhance the driveability of these larger more rugged vehicles, with 49 current sizes, from 16" all the way to 21" rim offerings. Featuring reliable traction and great handling all the while still offering 60,000 mile tread life warranty. Blackhawk AGILITY SUV tire wants you to experience your suv to it's fullest, either on your daily drive or making experiences happen, you can have confidence not only will the agility SUV take you where you are going, that it will do so in comfort. The AGILITY SUV welcomes your next adventure.

FEATURES

WET PERFORMANCE

- Wide circumferential grooves combined with shoulder lateral grooves allow water evacuation and provides excellent wet traction.

RIDE COMFORT

- Proprietary rubber cushion layer reduces road noise and vibration, delivering a consistent enjoyable ride.

TREADWEAR PERFORMANCE

- Through finite element analysis, wide tread surface uniform rigidity is achieved, this provides even ground pressure and promotes even wear.



	Size Dimension	LI/SR IC/IV	I.R.	T.D. 32nds	UTQG
4120167V	215/65R16	98H		10	700 A A
4120165V	215/70R16	100H		10	700 A A
4120168V	235/60R16	100H		10	700 A A
4120193V	245/70R16	107T		10	700 A A
4120159V	255/70R16	111H		10	700 A A
4120158V	265/70R16	112H		10	700 A A
4120169V	215/60R17	96H		10	700 A A
4120173V	225/55R17	97V		10	700 A A
4120161V	225/60R17	99H		10	700 A A
4120170V	225/65R17	102H		10	700 A A
4120186V	235/55R17	99V		10	700 A A
4120166V	235/60R17	102H		10	700 A A
4120160V	235/65R17	104H		10	700 A A
4120192V	245/65R17	107H		10	700 A A
4120183V	255/60R17	106H		10	700 A A
4120163V	265/65R17	112H		10	700 A A
4120157V	215/55R18	95H		10	700 A A
4120152V	225/55R18	98V		10	700 A A
4120177V	225/60R18	100H		10	700 A A
4120172V	235/50R18	97V		10	700 A A
4120150V	235/55R18	100V		10	700 A A
4120190V	235/60R18	107V	XL	10	700 A A
4120147V	235/65R18	106H		10	700 A A
4120176V	245/60R18	105H		10	700 A A
4120185V	255/55R18	109V	XL	10	700 A A
4120151V	255/65R18	111T		10	700 A A
4120175V	265/60R18	110H		10	700 A A
4120178V	225/55R19	99V		10	700 A A
4120164V	235/45R19	95V		10	700 A A
4120153V	235/50R19	103V	XL	10	700 A A
4120191V	235/55R19	105V	XL	10	700 A A
4120187V	245/55R19	103V		10	700 A A
4120149V	255/50R19	107V	XL	10	700 A A
4120180V	255/55R19	111V	XL	10	700 A A
4120174V	255/60R19	109H		10	700 A A
4120148V	265/50R19	110V	XL	10	700 A A
4120188V	235/55R20	105V	XL	10	700 A A
4120194V	245/50R20	102V		10	700 A A
4120171V	245/60R20	107H		10	700 A A
4120146V	255/50R20	109V	XL	10	700 A A
4120182V	255/55R20	110V	XL	10	700 A A
4120179V	265/50R20	107H		10	700 A A
4120181V	275/40R20	106W	XL	10	700 A A
4120154V	265/40R21	105W	XL	10	700 A A
4120155V	275/40R21	107W	XL	10	700 A A
4120189V	275/45R21	110W	XL	10	700 A A
4120184V	285/40R21	109W	XL	10	700 A A
4120156V	295/35R21	107W	XL	10	700 A A
4120162V	315/40R21	115W	XL	10	700 A A

AGILITY SUV PERFORMANCE CUV/SUV ALL-SEASON



Tire Direct
La nueva generación

Tire Direct
La nueva generación

BLACKHAWK



HT01 PERFORMANCE HT/CUV/SUV

The HT01 is engineered to deliver a combination of comfort and performance on pickups, SUVs and cross-over vehicles. A staggered tread block design provides a quiet, superior ride while full-depth sipes deliver exceptional all-weather traction throughout its long life. The HT01 features a specially formulated compound for enhanced tread life.

FEATURES

- Block design provides noise cancellation, balances pressure and allows for more contact points on the road surface.
- Block edge design provides better wet traction and handling.
- Enhanced upper shoulder profile allows better surface contact for control.
- Tie bars on shoulders for high speed stability.
- Jointless Bead Cover: spiral steel band wrapped around beads improves the structural rigidity of the tire resulting in a smooth ride.
- Rim Protector.



H, Q, R, S AND T SPEED RATED

	Size Dimension	L/SR IC/IV	I.R.	T.D. 32nds	UTQG
5545907V	225/70R15	100S	STD	11	700 A B
5545760V	235/75R15	105S	STD	12	700 A B
4120167V	215/65R16	98T	STD	12	700 A B
4120165V	215/70R16	100T	STD	11	700 A B
5545908V	225/70R16	103S	STD	12	700 A B
5545913V	225/75R16	104S	STD	11	700 A B
5545759V	235/70R16	106T	STD	11	700 A B
4120193V	245/70R16	107S	STD	12	700 A B
5545762V	245/75R16	111T	STD	11	700 A B
4120159V	255/70R16	111T	STD	11	700 A B
4120158V	265/70R16	112T	STD	11	700 A B
5545766V	265/75R16	116T	STD	11	700 A B
4120161V	225/60R17	99H	STD	11	700 A B
4120170V	225/65R17	102S	STD	11	700 A B
4120160V	235/65R17	104T	STD	12	700 A B
4120160V	235/65R17	104S	STD	12	700 A B
5545931V	235/75R17	109S	STD	11	700 A B
4120192V	245/65R17	107T	STD	11	700 A B
5545928V	245/70R17	110T	STD	11	700 A B
4120163V	265/65R17	112T	STD	11	700 A B
5545765V	265/70R17	115T	STD	11	700 A B
4120150V	235/55R18	100T	STD	10	700 A B
4120190V	235/60R18	107V	XL	11	700 A B
4120147V	235/65R18	106T	STD	11	700 A B
4120176V	245/60R18	105H	STD	11	700 A B
4120151V	255/65R18	111S	STD	11	700 A B
5545934V	255/70R18	113T	STD	11	700 A B
4120175V	265/60R18	110T	STD	11	700 A B
5545769V	275/65R18	116T	STD	11	700 A B
4120178V	225/55R19	99V	STD	11	700 A B
4120191V	235/55R19	101V	STD	11	700 A B
4120187V	245/55R19	103H	STD	11	700 A B
4120146V	255/50R20	105H	STD	11	700 A B
4120179V	265/50R20	107V	STD	11	700 A B
5545937V	275/45R20	110H	XL	10	700 A B
5545767V	275/55R20	113H	STD	10	700 A B
5545768V	275/60R20	115S	STD	11	700 A B
5545894V	LT215/85R16	115/112S	10PR	11	
5545771V	LT225/75R16	115/112S	10PR	13	
5545773V	LT235/85R16	120/116S	10PR	13	
5545775V	LT245/75R16	120/116S	10PR	13	
5545779V	LT265/75R16	123/120S	10PR	13	
5545772V	LT235/80R17	120/117R	10PR	13	
5545774V	LT245/70R17	119/116R	10PR	13	
5545776V	LT245/75R17	121/118S	10PR	11	
5545777V	LT265/70R17	121/118Q	10PR	13	
9630781V	235/65R16C*	121/119R	10PR	13	

* MILEAGE WARRANTY DOES NOT APPLY TO C-TYPE 235/65R16

HT01

PERFORMANCE HT/CUV/SUV

C-TYPE 235/65R16C

The Commercial C-type tire, engineered for the demanding conditions for LMD (Last Mile Delivery) vehicles.



BLACKHAWK

HA11

PREMIUM ALL-TERRAIN



HA11

PREMIUM ALL-TERRAIN

The HA11 is a premium all-terrain tire that can handle on-and-off road terrains with ease. With an advanced tread pattern and aggressive sidewall the HA11 delivers exceptional traction on all road conditions. Along with strength and durability it still delivers a smooth and quiet ride for cruising.

FEATURES

- Modern aggressive AT design.
- Multi width shoulder grooves improves wet grip.
- Stair-step tread grooves improves water evacuation and stone retention. High tensile strength bead wire.
- Jointless Bead Cover: spiral steel band wrapped around beads improves the structural rigidity of the tire resulting in a smooth ride.
- Extra Poly Ply for added strength.
- Rim protector



PREMIUM ALL-TERRAIN



R, S AND T SPEED RATED

	Size Dimension	LI/SR IC/W	I.R.	T.D. 32nds	UTQG
5545760V	235/75R15	109S	XL	12	500 A B
5545759V	235/70R16	106S	SL	13	500 A B
5545762V	245/75R16	111S	SL	13	500 A B
4120158V	265/70R16	112T	SL	13	500 A B
5545766V	265/75R16	116S	SL	13	500 A B
4120192V	245/65R17	107T	SL	13	500 A B
5545783V	255/70R17	112S	SL	13	500 A B
4120163V	265/65R17	112S	SL	13	500 A B
5545765V	265/70R17	115T	SL	13	500 A B
5545769V	275/65R18	116T	SL	13	500 A B
5545767V	275/55R20	117T	XL	13	500 A B
5545768V	275/60R20	115T	SL	13	500 A B
5545770V	31X10.50R15LT*	109S	6PR	16	—
5545784V	LT235/75R15*	100/107S	8PR	11	—
5545771V	LT225/75R16*	115/112S	10PR	16	—
5545773V	LT235/85R16*	120/116S	10PR	16	—
5545775V	LT245/75R16*	120/116S	10PR	16	—
5545779V	LT265/75R16*	123/120S	10PR	16	—
5545786V	LT285/75R16*	126/123S	10PR	16	—
5545772V	LT235/80R17*	120/117R	10PR	16	—
5545774V	LT245/70R17*	119/116S	10PR	16	—
5545776V	LT245/75R17*	121/118S	10PR	16	—
5545777V	LT265/70R17*	121/118S	10PR	16	—
5545785V	LT285/70R17*	121/118S	10PR	16	—
5545778V	LT265/70R18*	124/121R	10PR	16	—
5545780V	LT275/65R18*	123/120S	10PR	16	—
5545782V	LT275/70R18*	125/122R	10PR	16	—
5545781V	LT275/65R20*	126/123S	10PR	16	—

* 3PMS WINTER CERTIFIED



Tire Direct
La nueva generación

Tire Direct
La nueva generación

BLACKHAWK



RIDGECRAWLER A/T PREMIUM ALL-TERRAIN

The Blackhawk RIDGECRAWLER A/T is a premium all-terrain tire engineered for pickup trucks and SUVs. Featuring enhanced 3PMS certified traction, with a deep tread depth, it delivers superior performance in various on and off-road driving conditions. Recognized for its consistent reliability, the Blackhawk RIDGECRAWLER A/T is your vehicle's trusted all-terrain tire, providing a quiet and comfortable driving experience.

FEATURES

DRIVING COMFORT

- Optimized pitch sequence through Finite Element Analysis simulation software reduces resonance effects, contributing to a serene vehicle cabin.

ADVANCED TRACTION

- Backed by 3PMS Certification, deep all-terrain tread lugs, and staggered shoulder tread blocks, the Blackhawk RIDGECRAWLER A/T ensures reliable traction on diverse terrains and throughout the seasons.

TREAD LONGEVITY

- Benefiting from a broad tread footprint and reinforced shoulder support, the tire promotes uniform pressure distribution, preventing irregular wear and extending overall tread life.



PREMIUM ALL-TERRAIN



Size Dimension	L/SR IC/W	I.R.	T.D. 32nds	UTQG
235/75R15	109S	XL	13	620 A B
235/70R16	106S		13	620 A B
245/75R16	111S		13	620 A B
265/70R16	112T		13	620 A B
265/75R16	116S		13	620 A B
235/65R17	104S		13	620 A B
245/65R17	107S		13	620 A B
245/70R17	110T		13	620 A B
255/65R17	110T		13	620 A B
265/65R17	112S		13	620 A B
265/70R17	115S		13	620 A B
265/65R18	114T		13	620 A B
265/70R18	116T		13	620 A B
275/65R18	116T		13	620 A B
265/50R20	111T	XL	13	620 A B
275/55R20	117T	XL	13	620 A B
275/60R20	115T		13	620 A B
285/45R22	114H	XL	13	620 A B
LT225/75R16	115/112S	10PR	16	
LT235/85R16	120/116S	10PR	16	
LT245/75R16	120/116S	10PR	16	
LT265/75R16	123/120S	10PR	16	
LT235/80R17	120/117R	10PR	16	
LT245/70R17	119/116S	10PR	16	
LT245/75R17	121/118S	10PR	16	
LT265/70R17	123/120S	10PR	16	
LT285/70R17	126/123S	10PR	16	
LT315/70R17	126/123S	10PR	16	
LT265/70R18	124/121S	10PR	16	
LT275/65R18	123/120R	10PR	16	
LT275/70R18	125/122R	10PR	16	
LT265/60R20	121/118R	10PR	16	
LT275/55R20	120/117R	10PR	16	
LT275/60R20	123/120R	10PR	16	
LT275/65R20	126/123R	10PR	16	
LT285/60R20	125/122R	10PR	16	
LT305/55R20	121/118R	10PR	16	
31x10.50R15LT	109S	6PR	16	
33x12.50R18LT	118S	10PR	16	
33x12.50R20LT	114S	10PR	16	
35x12.50R17LT	125R	10PR	16	
35x12.50R18LT	123R	10PR	16	
35x12.50R20LT	121R	10PR	16	

RIDGECRAWLER A/T

PREMIUM ALL-TERRAIN



BLACKHAWK

CAMBODIA



RIDGECRAWLER R/T RUGGED TERRAIN

Explore the RIDGECRAWLER RT (rugged terrain) tire: Your gateway to limitless adventure. Purposely engineered for enduring durability, it promises unmatched performance across a variety of landscapes. The optimized tread design provides stability, and 3PMS certification ensures dependable performance in any weather. Its robust appearance commands attention. Elevate your journey with the RIDGECRAWLER RT tire – your key to adventure without limits.

FEATURES

All-Weather Traction

- Experience consistent grip and performance in various weather conditions throughout the year, from hot summers to frigid winters with the 3PMS certified badge and 3D sipes on all RT tires.

Enhanced Tread Pattern

- Optimized wide footprint tread design provides excellent traction, enhancing control on any surface. Enjoy a smooth and comfortable ride on paved roads while seamlessly transitioning to an off-road terrain.

Aggressive Sidewall Biters

- Durable sidewall lugs provide extra traction and protection when needed the most, either preventing cuts and snags or for those that air down on the trails.

PREMIUM ALL-TERRAIN



Tire Direct 
La nueva generación

Tire Direct 
La nueva generación

	Size Dimension	LI/SR IC/IV	I.R.	T.D. 32nds	UTQG	Stud Size
1600452K	265/70R17	115T	SL	16	600 A B	
1600469K	255/70R18	116T	XL	16	600 A B	
1600457K	265/60R18	114S	XL	16	600 A B	
1600458K	265/65R18	116T	XL	16	600 A B	
1600470K	265/70R18	116S	SL	16	600 A B	
1600471K	275/65R18	116T	XL	16	600 A B	
1600460K	265/50R20	111T	XL	16	600 A B	
1600448K	275/55R20	117T	XL	16	600 A B	
1600478K	275/60R20	116T	XL	16	600 A B	
1600451K	285/45R22	114Q	XL	16	600 A B	
1600453K	LT245/70R17	119/116Q	10PR	18		15
1600454K	LT245/75R17	121/118Q	10PR	18		15
1600455K	LT265/70R17	123/120Q	10PR	18		15
1600456K	LT285/70R17	126/123Q	10PR	18		15
1600472K	LT265/65R18	122/119Q	10PR	18		15
1600473K	LT265/70R18	124/121Q	10PR	18		15
1600474K	LT275/65R18	123/120Q	10PR	18		15
1600475K	LT275/70R18	125/122Q	10PR	18		15
1600479K	LT275/55R20	120/117Q	10PR	18		15
1600480K	LT275/60R20	123/120Q	10PR	18		15
1600481K	LT275/65R20	126/123Q	10PR	18		15
1600461K	LT305/55R20	125/122Q	12PR	18		15
1600466K	33X12.50R17LT	120Q	10PR	18		15
1600467K	35X12.50R17LT	125Q	10PR	18		15
1600468K	37X12.50R17LT	124Q	8PR	18		15
1600459K	33X12.50R18LT	122Q	12PR	18		15
1600476K	35X12.50R18LT	128Q	12PR	18		15
1600477K	37X12.50R18LT	128Q	10PR	18		15
1600462K	33X12.50R20LT	119Q	12PR	18		15
1600463K	35X12.50R20LT	125Q	12PR	18		15
1600482K	35X13.50R20LT	126Q	12PR	18		15
1600483K	37X12.50R20LT	126Q	10PR	18		15
1600464K	33X12.50R22LT	114Q	12PR	18		15
1600465K	35X12.50R22LT	121Q	12PR	18		15
1600484K	37X12.50R22LT	127Q	12PR	18		15
1600485K	37X13.50R22LT	128Q	12PR	18		15

RIDGECRAWLER R/T

RUGGED TERRAIN



BLACKHAWK

* LT TIRES ARE PINNED FOR STUDS

Tire Direct
La nueva generación

Tire Direct
La nueva generación



TIRE DIRECT



/TIRE_DIRECT



/TIREDIRECTMX



TIRE DIRECT